

## About

The US EPA's **Lead and Copper Rule (LCR)** protects communities from the risks of lead and copper exposure through drinking water by using science-based protocols to find the sources of lead, establishing a trigger to jumpstart mitigation in more communities, completing lead service line replacements, and requiring Water Utilities to identify and make public the locations of lead service lines.

## Contact Us



**Corporate Office**  
7256 Company Drive  
Indianapolis, IN 46237



317.888.1177



**BRADY DRYER**  
Environmental Compliance Manager  
✉ [bdryer@contactcei.com](mailto:bdryer@contactcei.com)

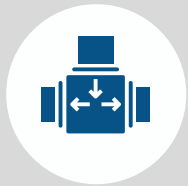


**RACHEL RUNGE, PE**  
Project Manager  
✉ [rrunge@contactcei.com](mailto:rrunge@contactcei.com)

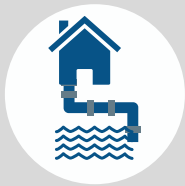


**TREANN QUICK, EI**  
✉ [tquick@contactcei.com](mailto:tquick@contactcei.com)

## SOURCES OF LEAD IN DRINKING WATER



Copper Pipe with  
Lead Solder (made or  
installed before 1986)



Lead Service Line  
from Water Main to  
Home



Faucets or Fixtures  
Inside of Home



Galvanized Pipe



Lead Goose Neck and  
Pig Tail Pipes

## THE HISTORY OF LCR

1986 - Safe Drinking Water Act Established  
1991 - LCR Established  
2007 - LCR Revisions Published  
2021 - LCR Final Revisions Published  
2024 - Communities Must Be LCR Compliant

LEARN MORE

[commonwealthengineers.com/LCR](https://commonwealthengineers.com/LCR)



# LEAD & COPPER RULE (LCR) FOR WATER UTILITIES

## Regulatory Compliance



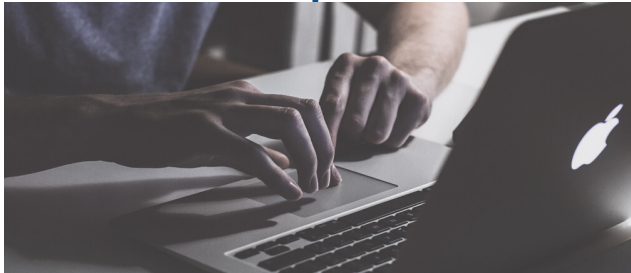
Do you have an action plan to address the public's risk to lead and copper exposure?

# LEAD & COPPER RULE (LCR) REVISIONS



## SAMPLING PLANS

- Monitoring Based on Distribution Size
- Monitoring of High-Risk Sites
- Sampling Frequency
- Sampling Tiers
- New "Trigger Level"



## EDUCATION AND OUTREACH

- Schools & Childcare Facilities Built Prior to 2014
- Testing Information Provided to Consumers
- Provide Assistance When Requested
- Website Information and Educational Materials
- Additional Notifications and Resources



## LEAD SERVICE LINE (LSL) INVENTORY & REPLACEMENT PLAN

- Inventory of All Service Lines in Utility
- Publication and Consumer Reports
- Inventory Updates
- Records of Inspections/Projects
- Systems with LSLs Need Replacement Plan



## CORROSION CONTROL TREATMENT (CCT)

- Allowed: pH Adjustments & Chemical Inhibitors
- Not Allowed: Calcium Hardness
- Corrosion Control Study May be Recommended
- Systems Without CCT Required to Perform Study Depending on Trigger Level and Action Levels

## 2021 LCR Revisions

**Original LCR** required limits on lead leaving the plant and in the transmission mains without guidance on service lines or premise plumbing.

**2021 LCR Revisions** focus on service lines and premise plumbing through changes in Sampling Plans, Education and Outreach, LSL Inventory, LSL Replacement Plans, and Corrosion Control Treatment.

Get the details at:

[commonwealthengineers.com/LCR](https://commonwealthengineers.com/LCR)

## Commonwealth Can Help

- Sampling Plans
- Service Line Inventory
- Corrosion Control Treatment
- Public Inventory Consultation
- GIS Implementation
- Removal/Replacement of Lead Service Lines
- Public Outreach
- Grants/Funding
- Participation Incentives
- IDEM/EPA RLCR Compliance Coordination by October 16, 2024