

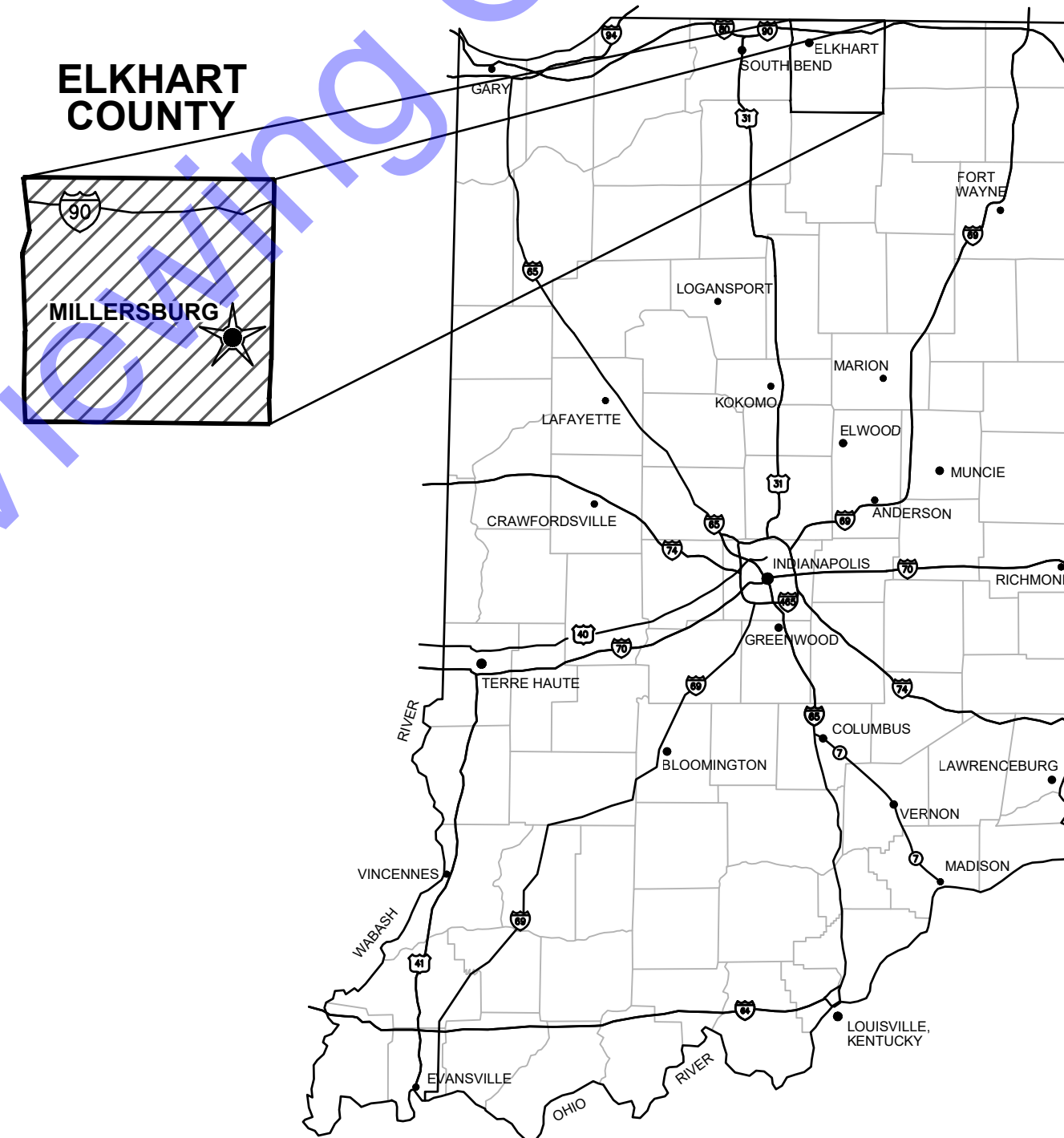
TOWN OF MILLERSBURG ELKHART COUNTY, INDIANA

2025 COMMUNITY CROSSINGS MATCHING GRANT (CCMG) ROUND 1

APRIL 2025

TOWN COUNCIL

DEAN SMITH PRESIDENT
 DANA RUTTER VICE PRESIDENT
 LARRY RANDOLPH MEMBER
 MACKENZIE TAYLOR CLERK-TREASURER



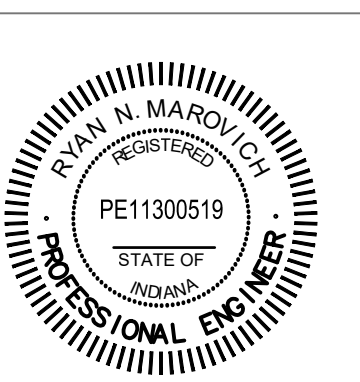
GENERAL LOCATION MAP

THE CURRENT INDIANA DEPARTMENT OF TRANSPORTATION (INDOT) STANDARD SPECIFICATIONS, MUTCD, AND MUNICIPAL TECHNICAL STANDARDS SHALL BE USED WITH THESE PLANS.

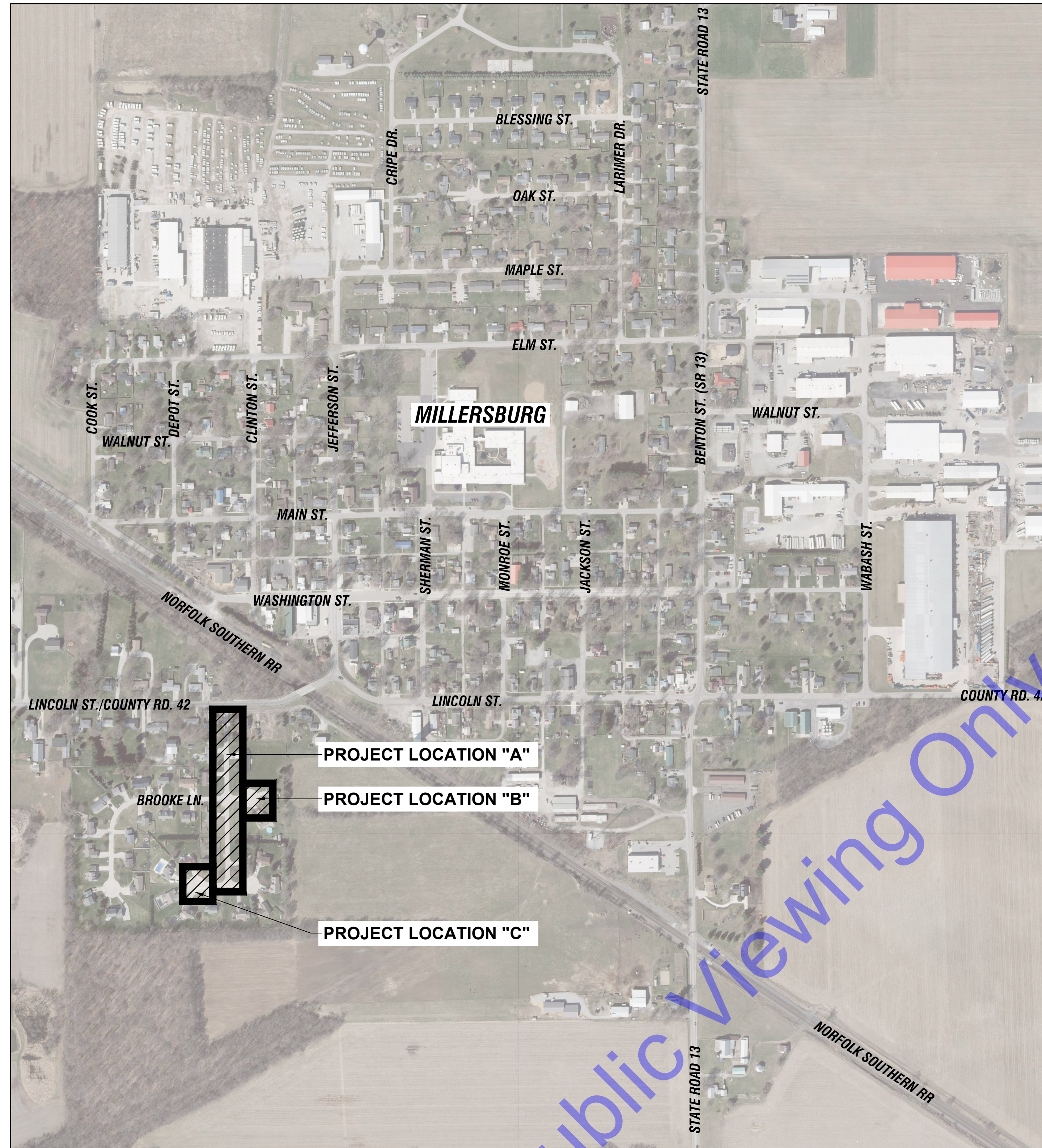


QA/QC BY : ROBYN MATTHEWS, P.E. 03/13/2025
 DATE :

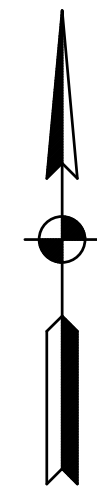
CERTIFIED BY : *Ryan Marovich* 03/13/2025
 RYAN MAROVICH, P.E. DATE :
 INDIANA P.E. No. 11300519



PROJECT NO. : H25011



VICINITY MAP
 SCALE: 1"=300'-0"
 0 300' 600'

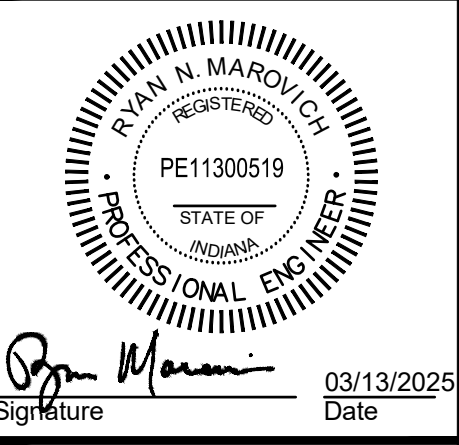
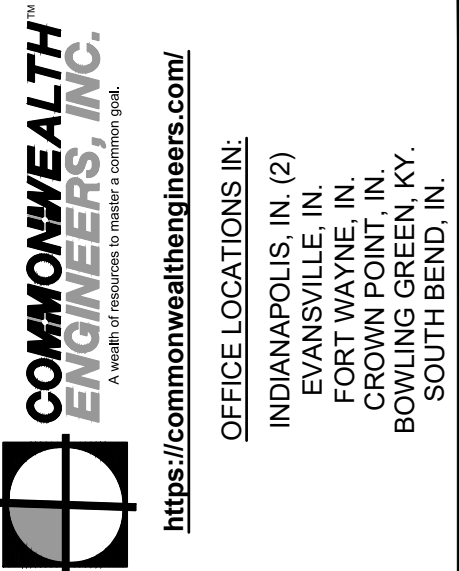


SHEET INDEX		
SHEET NUMBER	DRAWING NUMBER	SHEET TITLE
01	G1	TITLE SHEET
02	G2	VICINITY MAP AND DRAWING INDEX
03	G3	SUMMARY OF QUANTITIES AND GENERAL NOTES
04	C1	ROAD IMPROVEMENTS - TIMBER VALLEY ESTATES
05	CD1	CONSTRUCTION DETAILS

PROJECT LOCATION DESCRIPTION

LOCATION "A" : TIMBER VALLEY BLVD. FROM SOUTH TERMINUS TO LINCOLN ST.
 LOCATION "B" : BRYAN COURT FROM TIMBER VALLEY BLVD. TO TERMINUS
 LOCATION "C" : TRAVIS COURT FROM TIMBER VALLEY BLVD. TO TERMINUS

For Public Viewing Only - Not For Downloading



TOWN OF MILLERSBURG
 ELKHART COUNTY, INDIANA
 2025 COMMUNITY
 CROSSINGS MATCHING
 GRANT (CCMG) ROUND 1

© 2025 BY COMMONWEALTH ENGINEERS, INC. ALL RIGHTS RESERVED. REPRODUCTION OR TRANSMISSION IN ANY FORM OR BY ANY MEANS WITHOUT PERMISSION IS PROHIBITED.
Indiana 811
 Know what's below. 811 before you dig.
 1-800-382-5844
 (IT'S THE LAW)

No.	Submittal / Revision	Date	By

Designed By: RNM	Drawn By: RNM	Checked By: RLM
Issue Date: 03/13/25	Project No: H25011	Scale: AS SHOWN

VICINITY MAP AND
 DRAWING INDEX

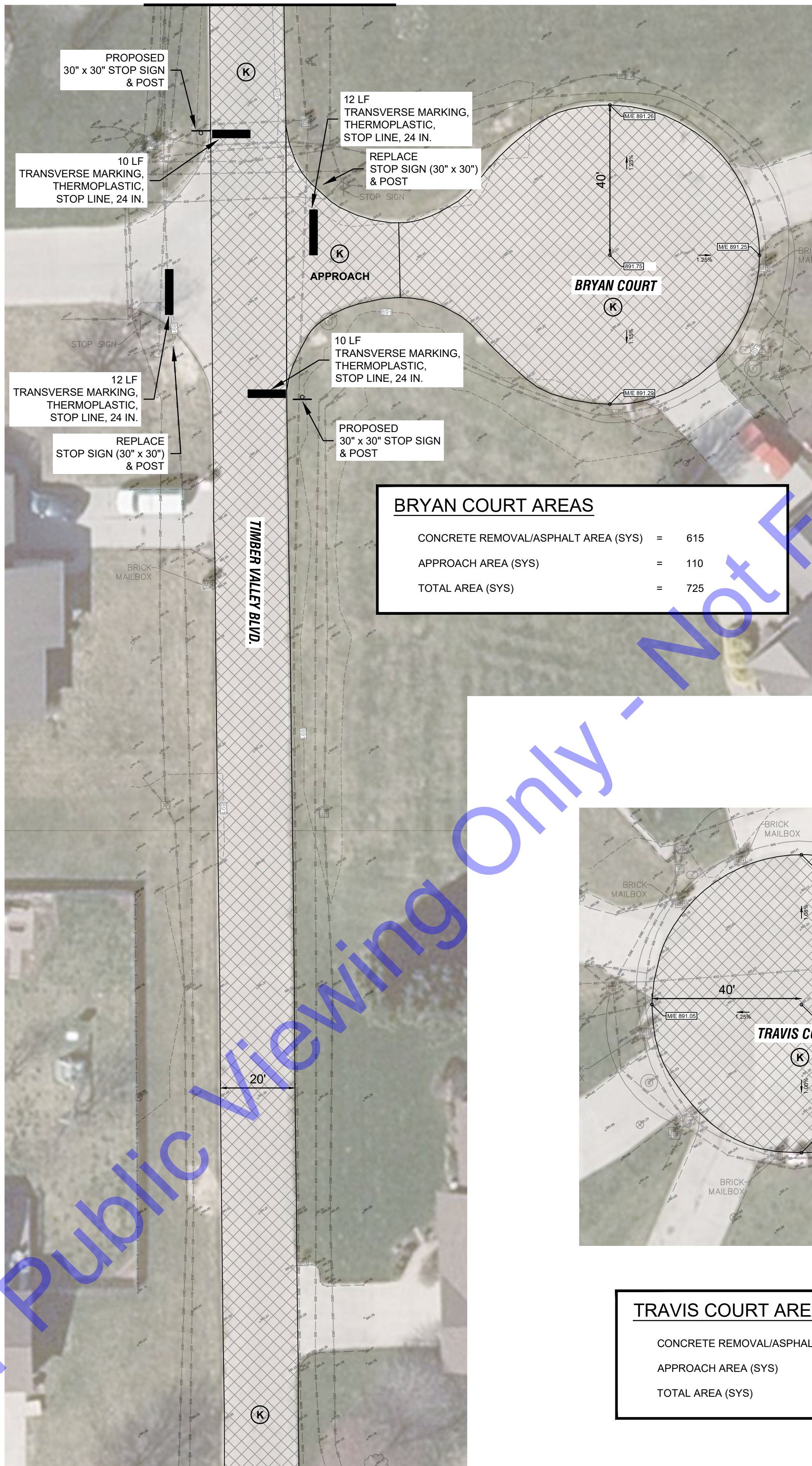
TIMBER VALLEY BOULEVARD AREAS

CONCRETE REMOVAL/ASPHALT AREA (SYS)	=	1,595
APPROACH AREA (SYS)	=	190
TOTAL AREA (SYS)	=	1,785



FOR CONTINUATION SEE THIS SHEET
MATCHLINE A

**MATCHLINE A
FOR CONTINUATION SEE THIS SHEET**



BRYAN COURT AREAS

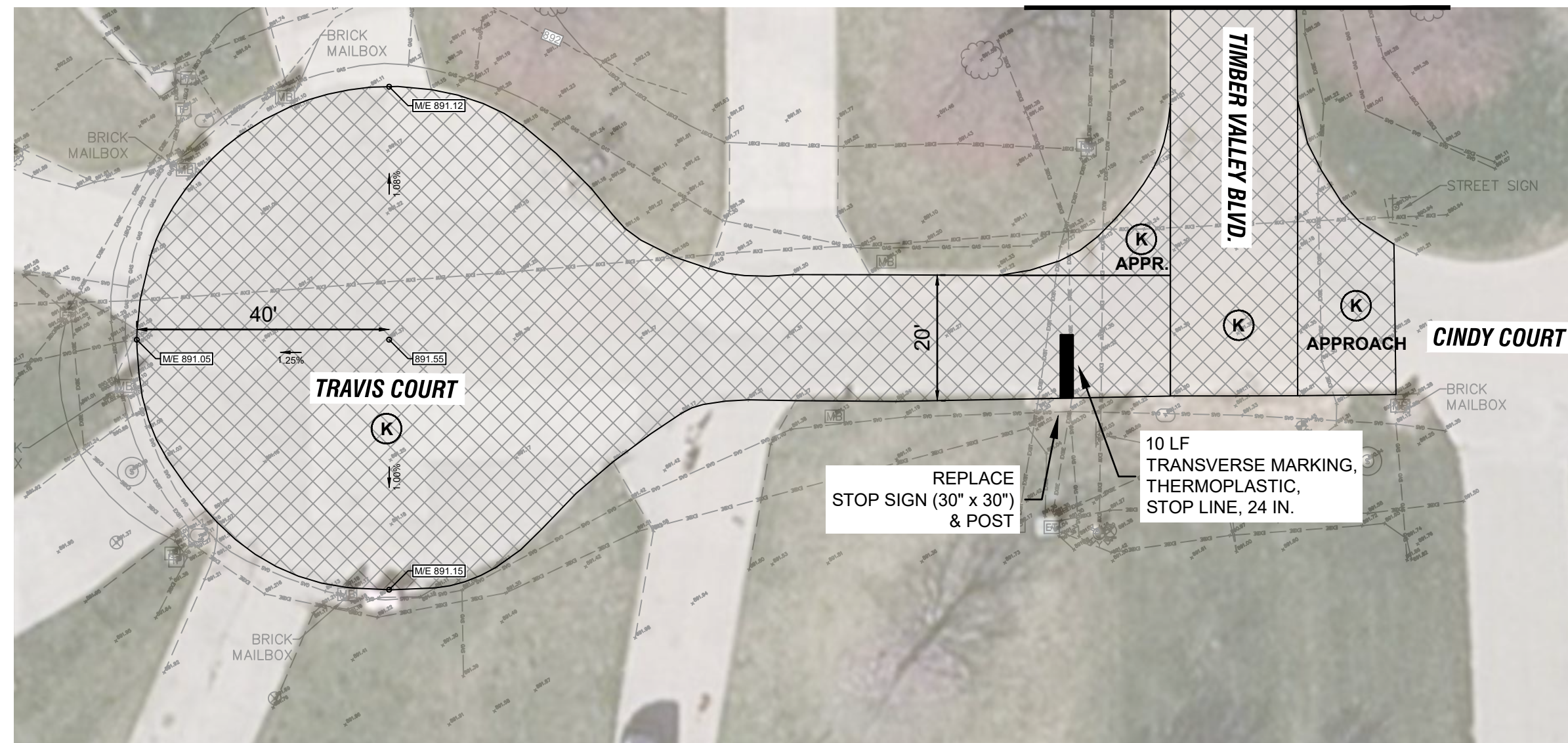
CONCRETE REMOVAL/ASPHALT AREA (SYS)	=	615
APPROACH AREA (SYS)	=	110
TOTAL AREA (SYS)	=	725

FOR CONTINUATION SEE THIS SHEET
MATCHLINE B

LEGEND

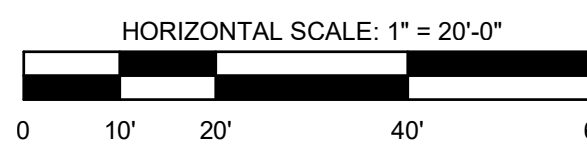
- (K) PAVEMENT REMOVAL (CONCRETE)
165#SYD HMA SURFACE, TYPE "B", 9.5 mm ON
275#SYD HMA INTERMEDIATE, TYPE "B", 12.5 mm ON
4 IN. (MIN.) COMPACTED AGGREGATE No. 53, BASE

**MATCHLINE B
FOR CONTINUATION SEE THIS SHEET**



TRAVIS COURT AREAS

CONCRETE REMOVAL/ASPHALT AREA (SYS)	=	755
APPROACH AREA (SYS)	=	30
TOTAL AREA (SYS)	=	785



COMMONWEALTH ENGINEERS, INC.
A Member of the Commonwealtheers Group, Inc.
OFFICE LOCATIONS IN:
INDIANAPOLIS, IN. (2)
EVANSVILLE, IN.
FORT WAYNE, IN.
CROWN POINT, IN.
BOWLING GREEN, KY.
SOUTH BEND, IN.
<https://commonwealthengineers.com/>

RYAN N. MAROITCA
REGISTERED PROFESSIONAL ENGINEER
STATE OF INDIANA
PE11300519
Signature: *Ryan Maroitca* Date: 03/13/2025

**TOWN OF MILLERSBURG
ELKHART COUNTY, INDIANA
2025 COMMUNITY
CROSSINGS MATCHING
GRANT (CCMG) ROUND 1**

© 2025 BY COMMONWEALTH ENGINEERS, INC. ALL RIGHTS RESERVED. REPRODUCTION OR TRANSMISSION IN ANY FORM OR BY ANY MEANS WITHOUT PERMISSION IS PROHIBITED.
Indiana 811
Know what's below. 811 before you dig.
1-800-382-5844
(IT'S THE LAW)

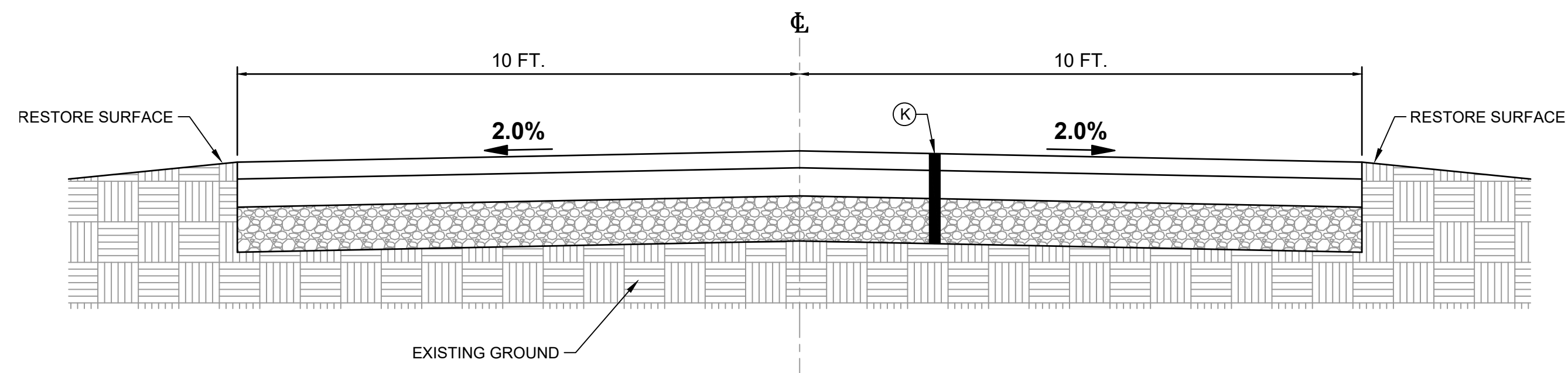
Date	
By	
Submittal / Revision	
No.	

Designed By:	Drawn By:	Checked By:
RNM	RNM	RLM
Issue Date:	Project No:	Scale:
03/13/25	H25011	AS SHOWN

ROAD IMPROVEMENTS

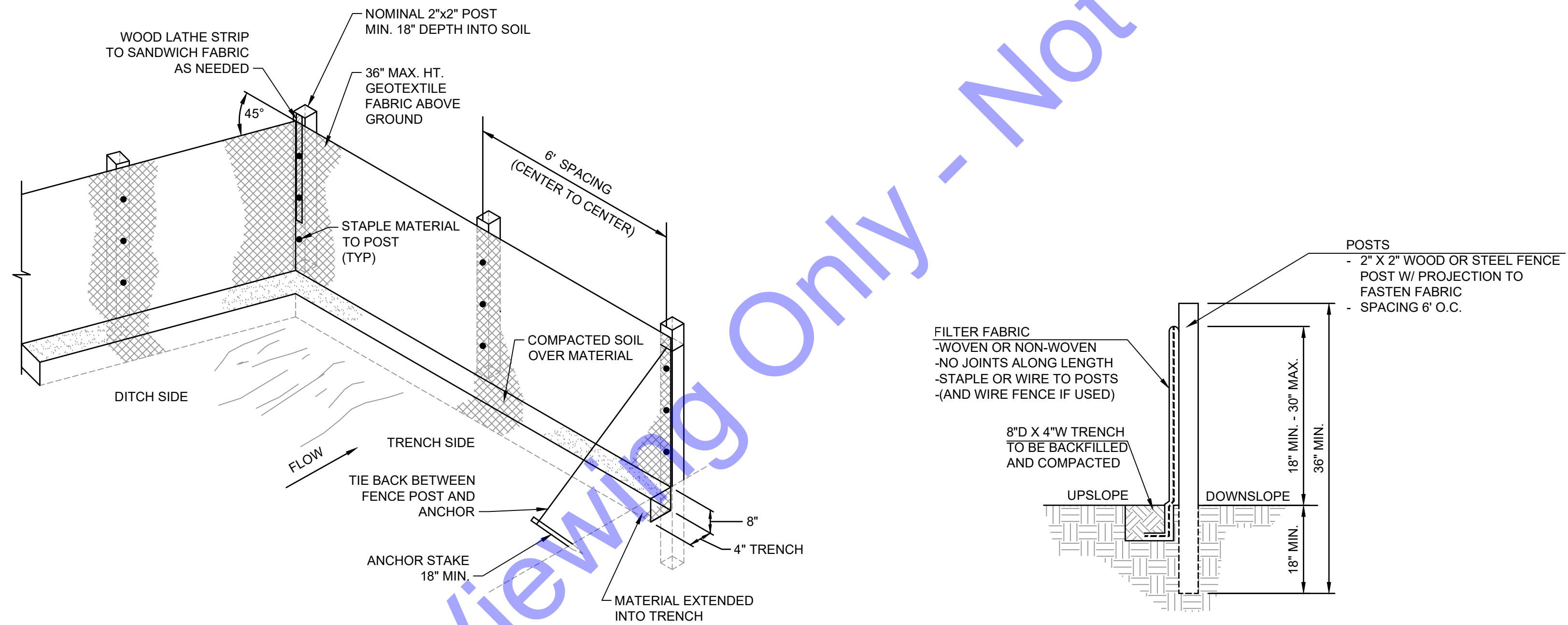
TIMBER VALLEY ESTATES

Drawing No:
C1
Sheet: 4 OF 5



TYPICAL CROSS SECTION
NO SCALE

- (K) 165 LBS/SYS HMA, SURFACE, TYPE B, 9.5 mm ON
275 LBS/SYS HMA, INTERMEDIATE, TYPE B, 19.0 mm ON
4 IN. COMPACTED AGGREGATE, No. 53



GENERAL NOTES:

- SILT FENCES SHOULD BE INSTALLED PRIOR TO MAJOR SOIL DISTURBANCE.
- FENCES SHALL BE INSTALLED BETWEEN THE TRENCH AND ANY DRAINAGE DITCHES OR SWALES.
- FENCES SHALL ALSO BE INSTALLED AROUND THE STOCKPILED SOILS.
- THE GEOTEXTILE SHALL BE FREE FROM DEFECTS, TEARS, PUNCTURES, FLAWS, DETERIORATION OR DAMAGE INCURRED DURING MANUFACTURE, TRANSPORTATION, STORAGE, OR INSTALLATION.
- TIE BACKS SHALL BE PLACED AS REQUIRED.

INSTALLATION:

- THE BOTTOM 1' OF THE FENCE SHALL BE BURIED IN THE TRENCH ON THE UPSLOPE SIDE.
- FENCE SHALL BE INSTALLED ALONG LEVEL GRADES, NOT ACROSS FLOW CHANNELS.
- IF OPTIONAL SUPPORT WIRE FENCE IS USED, POST SPACING MAY BE EXTENDED TO 8' O.C.

MAINTENANCE:

- INSPECT SILT FENCE PERIODICALLY (WEEKLY) AND AFTER EACH STORM EVENT.
- IF FABRIC IS TORN OR DAMAGED OR IN ANY WAY BECOMES INEFFECTIVE, REPLACE THE AFFECTED PORTION IMMEDIATELY.
- REMOVE DEPOSITED SEDIMENT WHEN IT REACHES HALF THE HEIGHT OF THE FENCE, OR IT IS CAUSING THE FABRIC TO BULGE.
- TAKE CARE NOT TO UNDERMINE THE FENCE DURING SEDIMENT REMOVAL.
- AFTER THE CONTRIBUTING AREA HAS BEEN STABILIZED, REMOVE THE FENCE AND REMAINING SEDIMENT, BRING THE DISTURBED AREA TO GRADE, AND STABILIZE.

SILT FENCE DETAIL
NO SCALE

For Public Viewing Only - Not For Downloading

COMMONWEALTH ENGINEERS, INC.
A Member of the Commonwealtheers.com/

OFFICE LOCATIONS IN:
INDIANAPOLIS, IN (2)
EVANSVILLE, IN
FORT WAYNE, IN
CROWN POINT, IN
BOWLING GREEN, KY
SOUTH BEND, IN

RYAN N. MAROITCA
REGISTERED PROFESSIONAL ENGINEER
STATE OF INDIANA
PE11300519

Ryan Maroitca
Signature Date 03/13/2025

**TOWN OF MILLERSBURG
ELKHART COUNTY, INDIANA**

**2025 COMMUNITY
CROSSINGS MATCHING
GRANT (CCMG) ROUND 1**

© 2025 BY COMMONWEALTH ENGINEERS, INC. ALL RIGHTS RESERVED. REPRODUCTION OR TRANSMISSION IN ANY FORM OR BY ANY MEANS WITHOUT PERMISSION IS PROHIBITED.

Indiana811
Know what's below. 811 before you dig.
1-800-382-5844
(IT'S THE LAW)

Date	
By	
Submittal / Revision	
No.	

Designed By: RNM	Drawn By: RNM	Checked By: RLM
Issue Date: 03/13/25	Project No: H25011	Scale: AS SHOWN

**CONSTRUCTION
DETAILS**

Drawing No:
CD1

Sheet: 5 OF 5