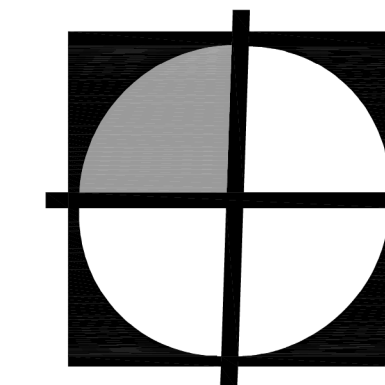
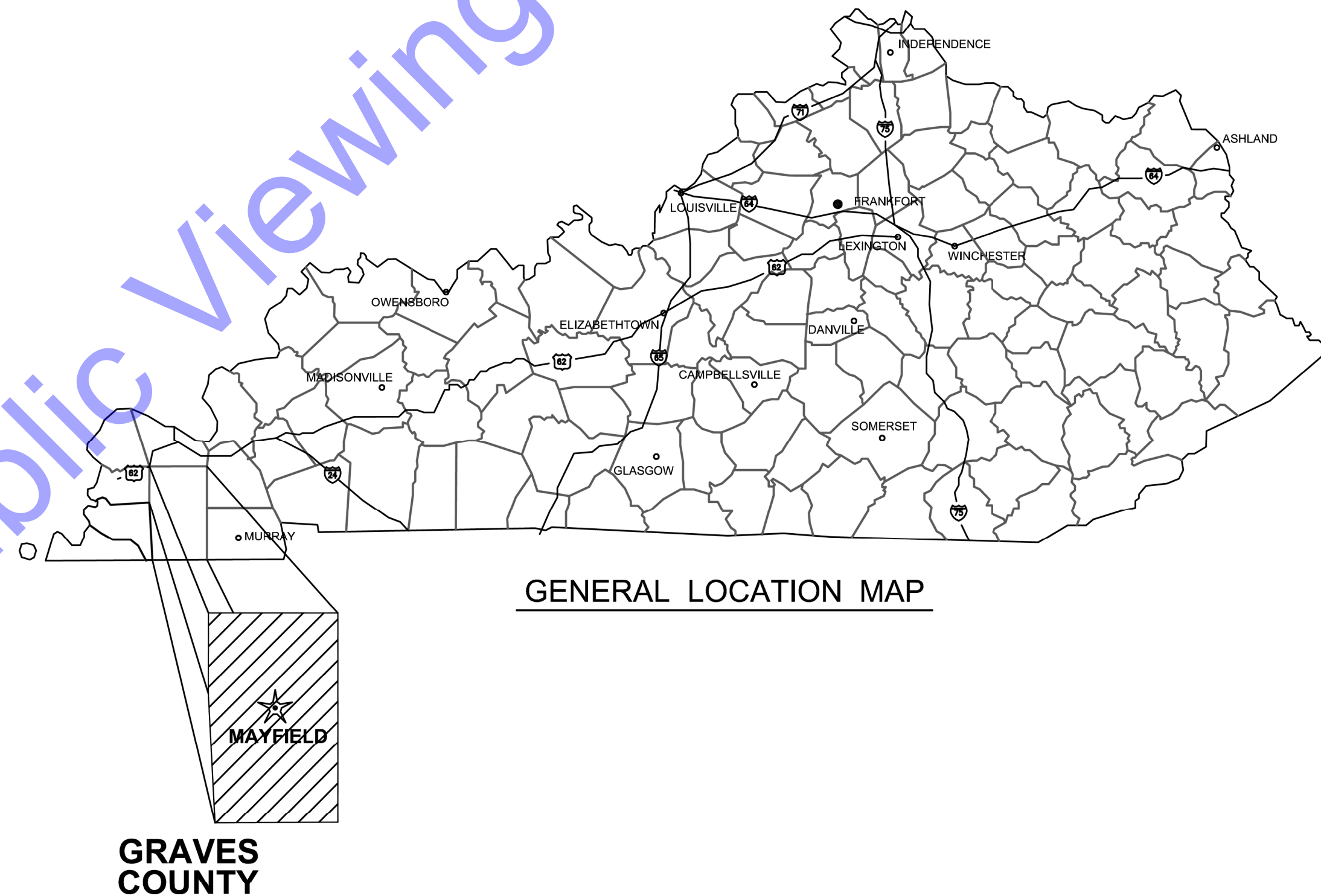


CITY OF MAYFIELD GRAVES COUNTY, KENTUCKY

ARBOR COURT CULVERT REPLACEMENT PROJECT AUGUST 2025

CITY COUNCIL OFFICIALS

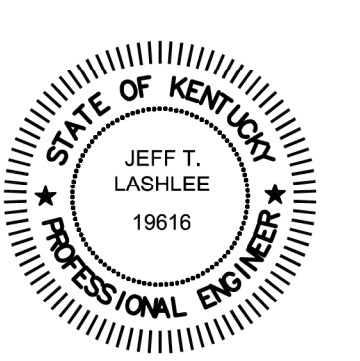
KATHY O'NAN MAYOR
 JANA ADAMS MEMBER
 LAUREN CARR MEMBER
 NATE COX MEMBER
 JODIE HANSEN MEMBER
 JOHNNY JACKSON MEMBER
 BARRY McDONALD MEMBER
 DERRICK PARROTT MEMBER
 BRAD ROGERS MEMBER
 LARRY JOE SEAY MEMBER
 CHUCK WHITNELL MEMBER
 KAREN WILSON TREASURER
 AARON BLOUNT PUBLIC WORKS DIRECTOR



**COMMONWEALTH™
ENGINEERS, INC.**
A wealth of resources to master a common goal.

QA/QC BY : DALE GICK, P.E. _____ 9/4/25
DATE :

CERTIFIED BY : *Jeff T. Lashlee* _____ 8/26/25
JEFF T. LASHLEE, P.E. DATE :
KENTUCKY P.E. No. 19616



GENERAL ABBREVIATIONS

| | | | | | |
|--------|--------------------------------------|-------|--------------------------|-----------|--------------------------|
| A | AIR | FLD | FILTRATE DRAIN | P/L | MATERIAL PROPERTY LINE |
| AB | ANCHOR BOLT | FLG | FLANGE | POJ | PUSH ON JOINT |
| AFF | ABOVE FINISH FLOOR | FL | FLUSHING LINE | PSF | POUNDS PER SQUARE FOOT |
| ALT | ALTERNATE | FM | FLOOR FORCE MAIN | PSI | POUNDS PER SQUARE INCH |
| ALUM | ALUMINUM | FRP | FIBER REINFORCED PLASTIC | PVC | POLYVINYL CHLORIDE |
| @ | AT | FT | FEET OR FOOT | PW | POTABLE WATER |
| APP. | APPARENT | FTG | FOOTING | R | RECIRCULATION RADIUS |
| ATT | AERATION TANK TRANSFER | FW | FINISHED WATER | RAD | RADIUS |
| AUTO | AUTOMATIC | G | GAS | RAS | RETURN ACTIVATED SLUDGE |
| AVG | AVERAGE | GALV | GALVANIZED | RCP | REINFORCED CONCRETE PIPE |
| B | BAFFLE | GEN | GENERAL | RD | ROOF DRAIN |
| BLDG | BUILDING | GRD | GROUND OR GRADE | REINF | REINFORCING |
| BM | BENCH MARK | HB | HOSE BIBB | REQ'D | REQUIRED |
| BOT | BOTTOM | HORIZ | HORIZONTAL | R/W (ROW) | RIGHT-OF-WAY |
| BRG | BEARING | HP | HORSEPOWER | SAN | SANITARY |
| CFM | CUBIC FEET PER MINUTE | HW | HOT WATER | SAS | SANITARY SEWER |
| CL | CENTERLINE | ID | INSIDE DIAMETER | SCH | SCHEDULE |
| CO | CLEAN OUT | IJ | ISOLATION JOINT | SECT | SECTION |
| COL/C | COLUMN | INV | INVERT | SF | SQUARE FEET |
| CONC | CONCRETE | IP | IRON PIN | SHT | SHEET |
| COP | COPPER | LAV | LAVATORY | SL | SAMPLE LINE |
| CJ | CONSTRUCTION JOINT | LB | POUND | SOS | STORM SEWER |
| CW | COLD WATER | LL | LIVE LOAD | SP | STOP PLATE |
| CY | CUBIC YARD | LLV | LONG LEG VERTICAL | SQ | SQUARE |
| D | DRAIN | LTG | LIGHTING | STD | STANDARD |
| DEC | DECANT | MAX | MAXIMUM | S STL. SS | STAINLESS STEEL |
| DIA | DIAMETER | MCC | MOTOR CONTROL CENTER | STL | STEEL |
| DIM | DIMENSION | MGD | MILLIONS GALLONS PER DAY | SUP | SUPERNATANT |
| DI | DUCTILE IRON PIPE | MH | MANHOLE | SY | SQUARE YARD |
| DL | DEAD LOAD | MIN | MINIMUM, MINUTE | TOS | TOP OF SLAB |
| DSPT | DOWN SPOUT | MJ | MECHANICAL JOINT | TOW | TOP OF WALL |
| DWG | DRAWING | NC | NORMALLY CLOSED | TW | TERTIARY WATER |
| E | ELECTRICAL CONDUIT | NG | NATURAL GAS | TYP | TYPICAL |
| EA | EACH | NIC | NOT IN CONTACT | V | VACUUM OR VALVE |
| EF | EACH FACE | NO | NORMALLY OPEN | VAR | VARIES |
| EFFL | EFFLUENT | NO. | NUMBER | VERT | VERTICAL |
| EL | ELEVATION | NPW | NON-POTABLE WATER | W | WEIR |
| EW | EACH WAY | OC | ON CENTER | W/ | WITH |
| EX | EXISTING | OD | OUTSIDE DIAMETER | W/O | WITHOUT |
| EXF | EXHAUST FAN | OPG | OPENING | WAS | WASTE ACTIVATED SLUDGE |
| EXP JP | EXPANSION JOINT | OPP | OPPOSITE | WC | WATER CLOSET |
| F | FILTER | PB | PULL BOX | WH | WATER HEATER |
| FCAR | FLANGED COUPLING ADAPTER, RESTRAINED | PE | POLYETHYLENE EXP. JT. | WL | WATER LINE |
| FD | FLOOR DRAIN | | | WWF | WELDED WIRE FABRIC |
| FDN | FOUNDATION | | | YH | YARD HYDRANT |
| FH | FIRE HYDRANT | | | | |

GENERAL NOTES

- ALL PROPERTY AND RIGHT-OF-WAY LINE INFORMATION SHOWN IN DRAWING SET WERE SURVEYED BY LANDMARK ENGINEERING BY THAD LUCAS PLS NO. 3569.
 - CONTRACTOR SHALL TAKE PRECAUTIONARY ACTIONS TO AVOID IMPACTING EXISTING UTILITIES INCLUDING CONTACTING KUNTUCKY811.
 - EXISTING UTILITY INFORMATION SHOWN IN DRAWING SET, MEETS "ASCE 36-02" QUALITY LEVEL "C", UNLESS OTHERWISE NOTED.
- UTILITY COORDINATION AND PROJECT DIRECTION OF EXISTING SUBSURFACE UTILITY DATA:
- UTILITY QUALITY LEVEL DESCRIPTIONS:**
- UTILITY QUALITY LEVEL A** - PRECISE HORIZONTAL AND VERTICAL LOCATION OF UTILITIES OBTAINED BY THE ACTUAL EXPOSURE (OR VERIFICATIONS OF PREVIOUSLY EXPOSED AND SURVEYED UTILITIES) AND SUBSEQUENT MEASUREMENT OF SUBSURFACE UTILITIES, USUALLY AT A SPECIFIC POINT. ACCURACY OF LOCATION MATCHES PROJECT SURVEY TOLERANCE.
- UTILITY QUALITY LEVEL B** - INFORMATION OBTAINED THROUGH THE APPLICATION OF APPROPRIATE SURFACE GEOPHYSICAL METHODS TO DETERMINE THE EXISTENCE AND APPROXIMATE HORIZONTAL POSITION SUBSURFACE UTILITIES. THE RELIABILITY OF THIS INFORMATION IS SURVEYED TO PROJECT CONTROL AND SUBJECT TO ACCURACY LEVELS OF THE GEOPHYSICAL TOLERANCE DEFINED BY THE PROJECT.
- UTILITY QUALITY LEVEL C** - INFORMATION OBTAINED BY SURVEYING AND PLOTTING VISIBLE ABOVE GROUND UTILITY FEATURES AND CORRELATING QUALITY LEVEL "D" INFORMATION.
- UTILITY QUALITY LEVEL D** - INFORMATION DERIVED FROM EXISTING RECORDS OR VERBAL RECOLLECTIONS.
- NORTHING AND EASTING COORDINATES SHOWN ON ALL MANHOLE, INLETS, ETC. ARE SHOWN FROM CENTER OF STRUCTURE NOT CASTING, UNLESS OTHERWISE NOTED.
 - ALL MANHOLES THAT HAVE PIPE INVERT DIFFERENTIAL OF 2' OR GREATER, SHALL BE CONSIDERED A DROP MANHOLE. CONTRACTOR SHALL REFER TO MISCELLANEOUS DETAILS AND DETAILED SPECIFICATIONS FOR MORE INFORMATION.

PROJECT NOTES

- MOT NOTES:**
- CONTRACTOR TO MAINTAIN TRAFFIC IN PHASES WHILE BUILDING PROJECT.
 - CONTRACTOR SHALL NOT DISRUPT TRAFFIC IN A SINGLE LANE FOR MORE THAN 48 HOURS.
 - DROP OFFS OF LESS THAN 6" SHALL BE PROTECTED WITH DRUMS AT ALL TIMES.
 - DROP OFFS EXCEEDING 6" SHALL ONLY EXIST DURING DAYLIGHT HOURS WITH FLAGGERS PRESENT.
 - IF DROPS OFFS EXCEEDING 6" NEED TO BE LEFT OVERNIGHT, STEEL PLATING SHALL BE USED.
 - ALL SIGNS, BARRICADES, AND OTHER TRAFFIC CONTROL DEVICES SHALL BE PLACED IN ACCORDANCE WITH LATEST EDITION OF THE MUTCD AND KYTC STANDARDS.
 - CONTRACTOR IS RESPONSIBLE FOR PROPER IMPLEMENTATION AND MAINTENANCE OF THE TRAFFIC CONTROL PLAN.
 - MAINTAIN ACCESS TO DRIVEWAYS AT ALL TIMES OR COORDINATE CLOSURE WITH PROPERTY OWNER.

UTILITY/PROJECT CONTACT INFORMATION

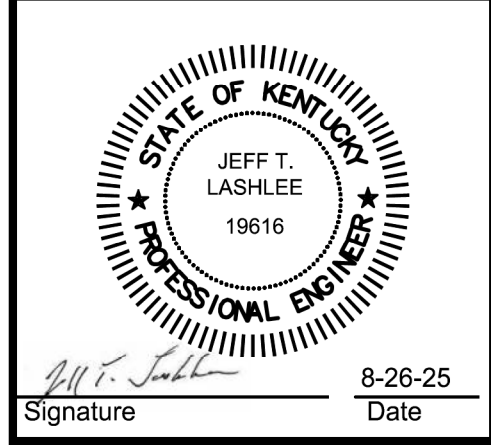
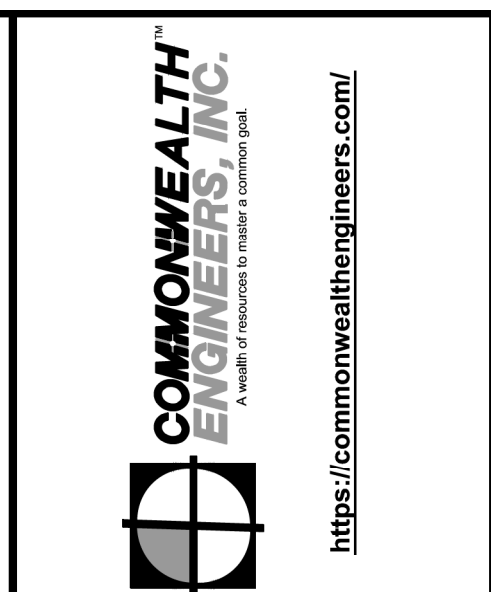
| | |
|--|---|
| ELECTRIC: MAYFIELD ELECTRIC AND WATER SERVICE CLINT WOODWARD PHONE: 270-247-4661 | WATER AND SEWER: MAYFIELD ELECTRIC AND WATER SERVICE ERIC HICKS PHONE: 270-705-4473 |
| TELEPHONE: AT&T DISTRIBUTION PHONE: 800-288-2020 | GAS: ATMOS PHONE: 888-286-6700 |
| FIBER OPTIC: MAYFIELD ELECTRIC AND WATER SERVICE PHONE: 270-247-4661 | SANITARY SEWER: CITY OF CLINTON WASTEWATER PHONE: 270-653-6419 |
| COMMUNICATIONS: WINDSTREAM KENTUCKY PHONE: 800-941-3430 | |

HATCHING SYMBOLS

| | |
|--|---|
| | -CMU WALL (PLAN VIEW) |
| | -GRANULAR BACKFILL (PROFILE VIEW) |
| | -DEMOLITION (CONTRACTOR SHALL REFER TO DETAILED SPECIFICATIONS) |
| | -GROUT |
| | -CONCRETE |
| | -STEEL |
| | -COMPACTED GRANULAR BACKFILL OR COMPACTED FOUNDATION |
| | -ABANDONED IN PLACE |

DRAWING SET LEGEND

| | | | | | |
|--|----------------------------------|--|----------------------------|--|-------------------------------|
| | EXISTING OVERHEAD TELEPHONE LINE | | AC UNIT | | TELEPHONE MANHOLE |
| | EXISTING GAS LINE AND VALVE | | BOLLARD | | TELEPHONE LINE MARKER |
| | EXISTING WATER LINE AND VALVE | | Boulder / LARGE ROCK | | TRAFFIC MANHOLE |
| | EXISTING FIBER OPTIC LINE | | C.L. CENTER LINE MONUMENT | | WATER LINE MARKER |
| | EXISTING OVERHEAD ELECTRIC LINE | | R/W CENTER LINE MONUMENT | | WATER METER |
| | EXISTING BURIED ELECTRIC | | CONTROL POINT / BENCH MARK | | VALVE |
| | EXISTING NON-POTABLE WATER LINE | | DRILL HOLE | | IRRIGATION CONTROL VALVE |
| | EXISTING POTABLE WATER LINE | | MAIL BOX | | FIRE HYDRANT |
| | EXISTING BURIED TELEPHONE LINE | | FLAG POLE | | FLUSH HYDRANT |
| | EXISTING FENCE | | POST | | YARD HYDRANT |
| | APP. R/W | | STUMP | | WALL SPIGOT |
| | APP. P.L. | | BUSH / HEDGE | | EXISTING PIPE PLUG |
| | EDGE OF ROAD | | DECIDUOUS TREE | | STORM CATCH BASIN (SQUARE) |
| | EDGE OF ROAD WITH CURB | | CONIFEROUS TREE | | STORM CATCH BASIN (ROUND) |
| | 785 | | SIGN | | STORM CURB INLET |
| | 784 | | UTILITY LOCATE FLAG | | STORM MANHOLE |
| | NEW WATER LINE | | GAS LINE MARKER | | SANITARY MANHOLE |
| | 785 | | GAS VALVE | | SANITARY VALVE |
| | 784 | | GAS METER | | CLEANOUT |
| | | | GUY POLE | | VENT |
| | | | POWER POLE | | NEW VALVE |
| | | | LIGHT POLE | | NEW FIRE HYDRANT |
| | | | GUY WIRE | | NEW FLUSH HYDRANT |
| | | | ELECTRIC METER | | NEW WET SADDLE AND VALVE BODY |
| | | | ELECTRIC PANEL | | NEW PLUG |
| | | | ELECTRIC TRANSFORMER | | NEW LINE STOP |
| | | | HAND HOLE BOX | | NEW CUT AND CAP |
| | | | FIBER OPTIC MARKER | | NEW SANITARY MH |
| | | | TEL/TV PEDESTAL | | |



CITY OF MAYFIELD
GRAVES COUNTY, KENTUCKY

ARBOR COURT
CULVERT REPLACEMENT PROJECT

2025 BY COMMONWEALTH ENGINEERS, INC. ALL RIGHTS RESERVED. REPRODUCTION OR TRANSMISSION OF THIS DRAWING WITHOUT PERMISSION IS PROHIBITED.

Kentucky 811
Know what's below. 811 before you dig.
1-800-762-8007
(IT'S THE LAW)

| | |
|----------------------|--|
| Date | |
| By | |
| Submitted / Revision | |
| No. | |

| | | |
|--------------|-----------|-------------|
| Designed By: | Drawn By: | Checked By: |
| JTL | KJG | JTL |

| | | |
|-------------|-------------|----------|
| Issue Date: | Project No: | Scale: |
| 9/4/25 | D25014 | AS SHOWN |

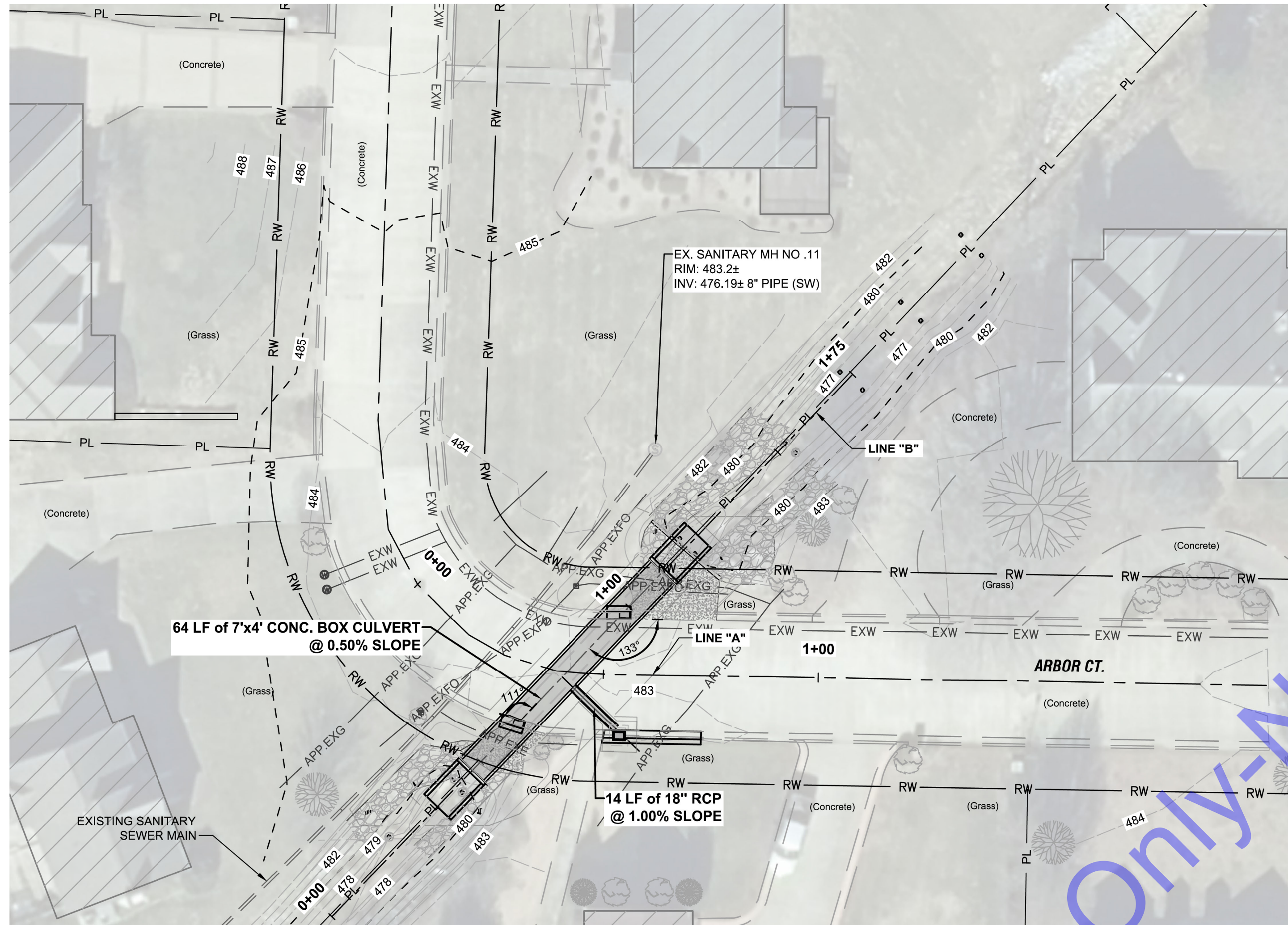
GENERAL ABBREVIATIONS, LEGENDS, SYMBOLS AND NOTES

Drawing No:
G3

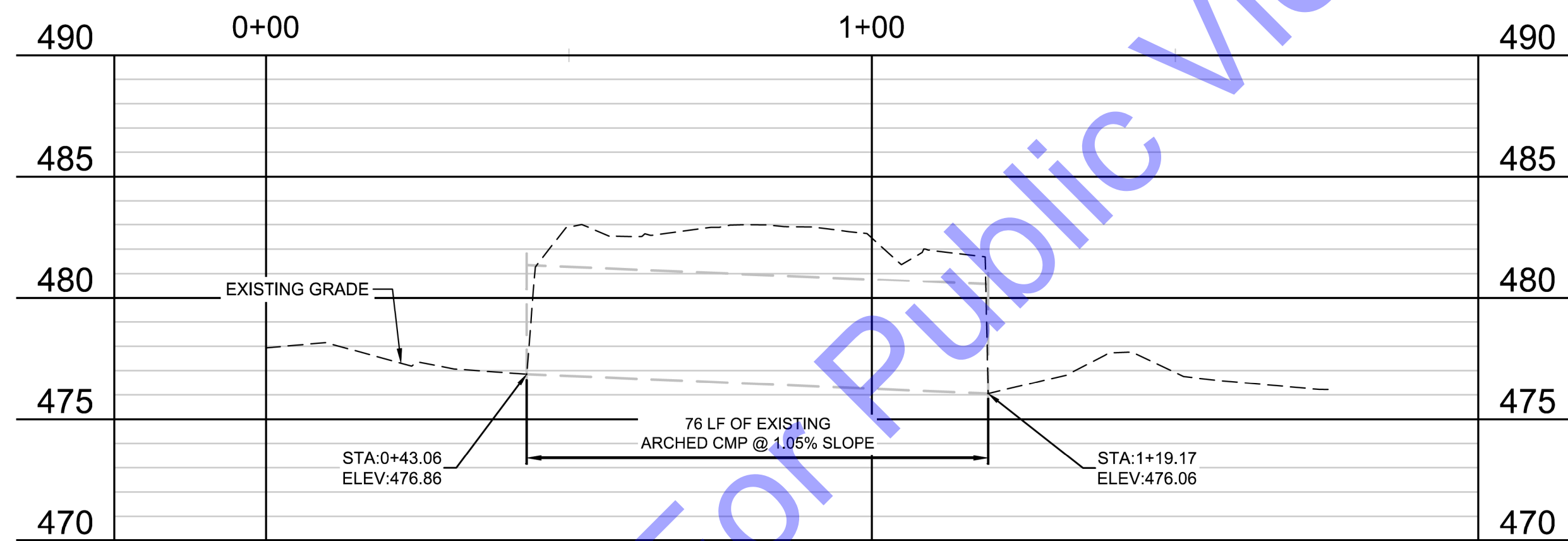
Sheet: 03 OF 19

FILE: Z:\KENTUCKY CLIENTS\MAYFIELD\DD\2514\14\000 MITIGATION PROJECTS\CDATA\CURRENT FILES\DRAWINGS\ARBOR CT02_General Drawings.dwg
Saved: 08/20/25 2:55:52 PM
Plotted: 08/20/25 02:51 AM
Current User: Van Gennep
User: Van Gennep

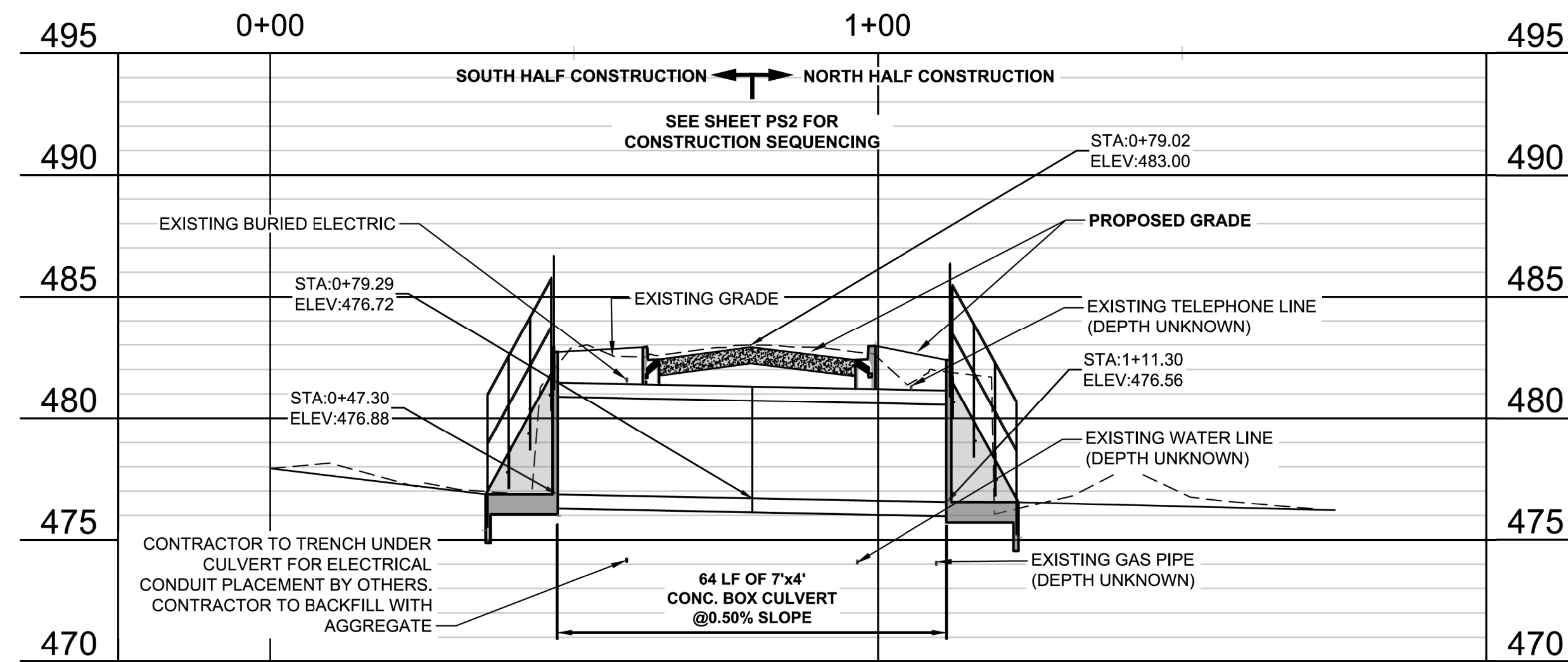
File: Z:\COMMONWEALTH\CLIENTS\MAYFIELD\02514_01\00 MITIGATION PROJECTS\CDMA CURRENT FILES\DRAWINGS\ARBOR CT\04 - PLAN AND PROFILE DRAWINGS.DWG
 Sheet: 09 OF 19
 Date: 09/25/25 3:08:52 PM
 User: JTL
 Project: 02514_01
 Job: 02514_01



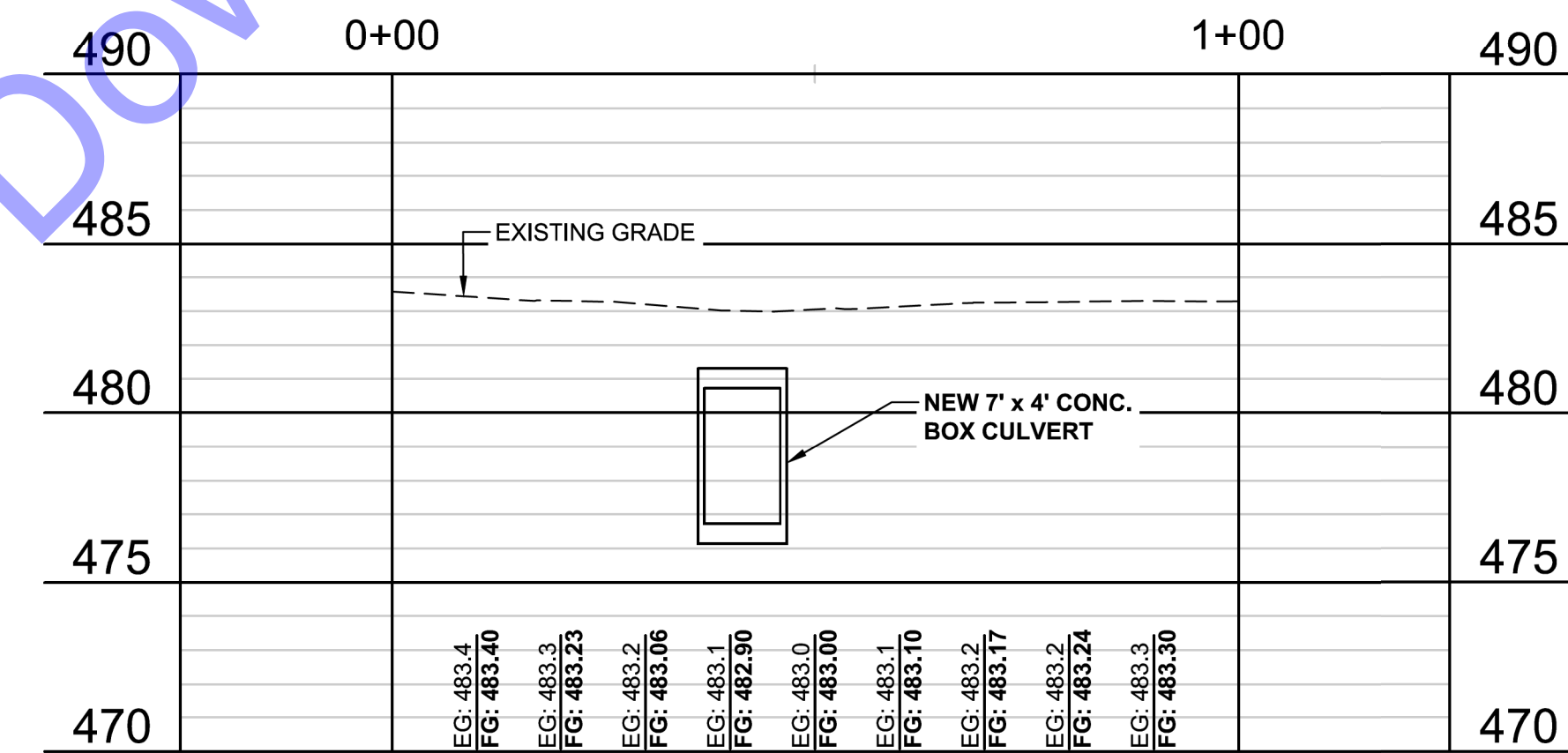
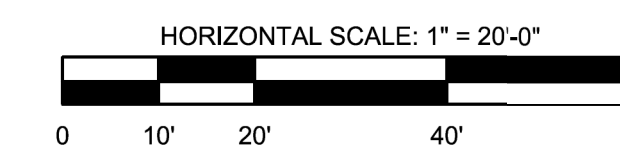
PLAN VIEW - LINE "A" AND LINE "B"



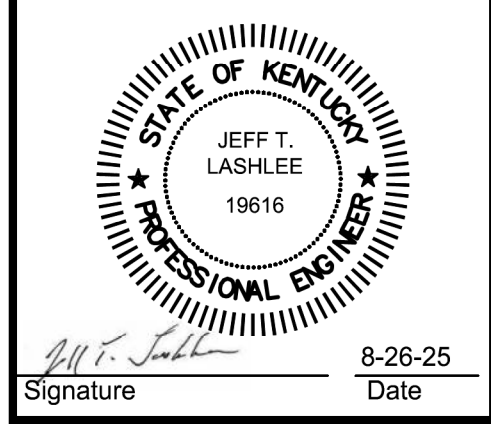
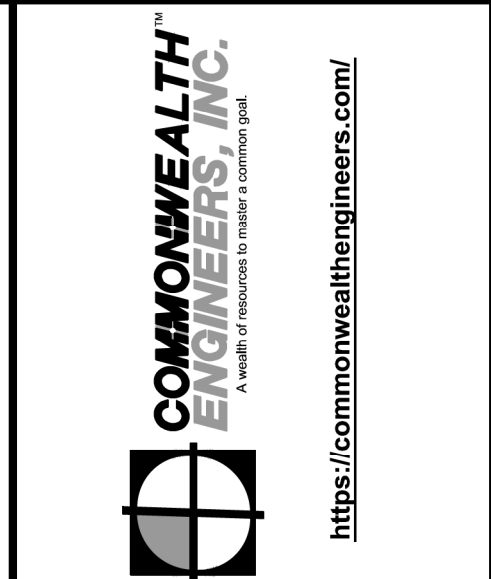
EXISTING PROFILE VIEW



PROPOSED PROFILE VIEW



EXISTING CL. ROAD - LINE "A" PROFILE VIEW WITH IMPROVEMENTS



Signature: *[Signature]* Date: 8-26-25

CITY OF MAYFIELD
 GRAVES COUNTY, KENTUCKY
 ARBOR COURT
 CULVERT REPLACEMENT PROJECT

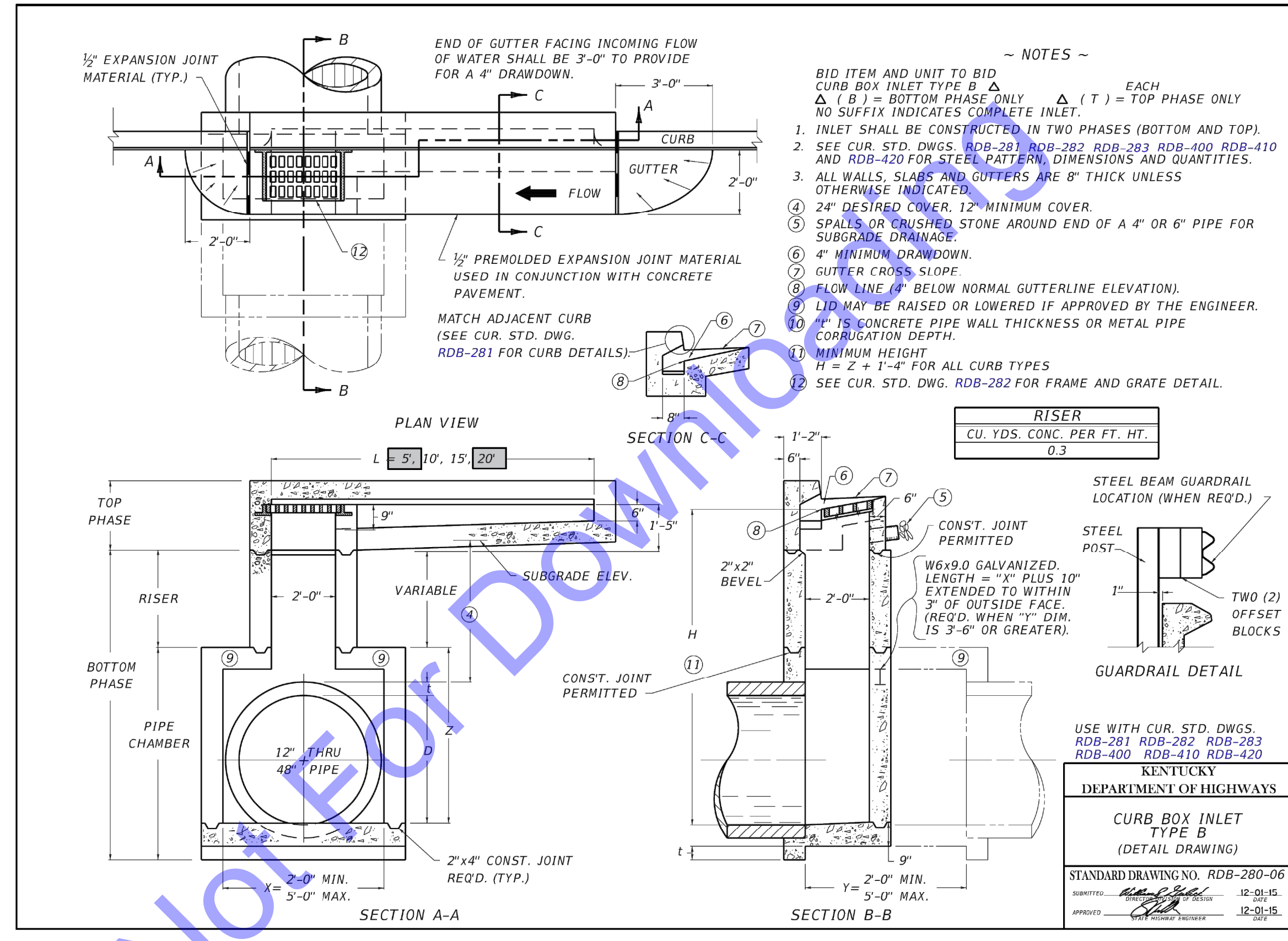
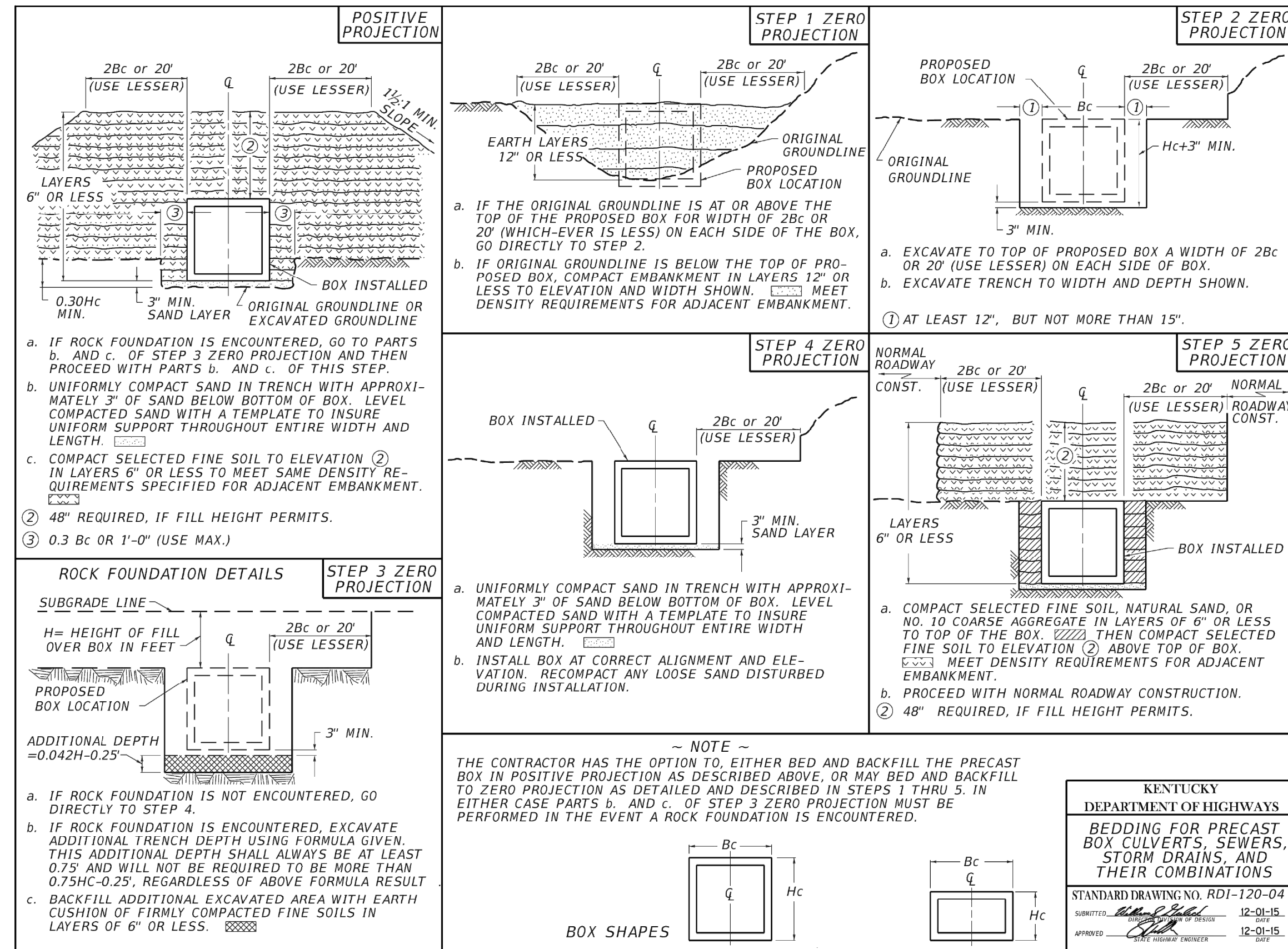
© 2025 BY COMMONWEALTH ENGINEERS, INC. ALL RIGHTS RESERVED. REPRODUCTION OR TRANSMISSION IN ANY FORM OR BY ANY MEANS WITHOUT PERMISSION IS PROHIBITED.
Kentucky 811
 Know what's below. 811 before you dig.
 1-800-752-8007
 (IT'S THE LAW)

| Date | By | Submitted / Revision No. |
|------|----|--------------------------|
| | | |

Designed By: JTL
 Drawn By: KJG
 Checked By: JTL
 Issue Date: 9/4/25
 Project No: D25014
 Scale: AS SHOWN

PLAN AND PROFILE - LINE "A" AND LINE "B"

Drawing No: **C1**
 Sheet: 09 OF 19



DIMENSIONS AND ESTIMATE OF QUANTITIES (TOP PHASE)

| GRADE | SAG | THROAT "L" | CONC. | NO. 5 STEEL BARS | | | | | | | | | | | | LBS. | |
|-------|-----|------------|-------|------------------|-------|--------|-----------|-----------|-------|-------|-------|-----------|-------|-------|---|-------|-----|
| | | | | BAR a | BAR b | BAR c | BAR d (4) | BAR d (5) | BAR e | BAR f | BAR g | BAR k (1) | BAR m | | | | |
| 1 | 5 | 5'-0" | 0.8 | 7 | 7 | 6'-0" | 3'-0" | 1'-6" | 4 | | | | | | | | 127 |
| 2 | 6 | 10'-0" | 1.5 | 17 | 17 | 11'-0" | 8'-0" | 4'-0" | 10 | 2'-7" | 3 | 3'-0" | 7 | 1'-2" | 4 | 2'-0" | 233 |
| 3 | 7 | 15'-0" | 2.1 | 27 | 27 | 16'-0" | 13'-0" | 6'-6" | 14 | 2'-7" | 3 | 3'-0" | 7 | 1'-2" | 4 | 2'-0" | 333 |
| 4 | 8 | 20'-0" | 2.8 | 37 | 37 | 21'-0" | 18'-0" | 9'-0" | 20 | 2'-7" | 3 | 3'-0" | 7 | 1'-2" | 4 | 2'-0" | 439 |

~ NOTES ~

- USE "k" BARS ONLY IN CONJUNCTION WITH THE RISER.
- INLETS ARE SHOWN ON PLANS AS "CURB BOX INLET TYPE B". FOLLOWING THIS ON THE PLANS ARE TWO NUMBERS AND A BOX HEIGHT. USE SECOND NUMBER WITH THIS CHART.
- MANUFACTURER'S DRAFT WILL BE ACCEPTED ON ALL CASTINGS.
- THIS SET OF "d" BARS ARE TO BE USED ONLY WHEN THE BOX INLET IS BUILT ON GRADE.
- THIS SET OF "e" BARS ARE TO BE USED ONLY WHEN THE BOX INLET IS BUILT IN A SAG.
- "c", "d", "f", "g", "k", AND "m" BARS ARE ALL STRAIGHT BARS.
- THE ENGINEER MAY REQUIRE ADDITIONAL REINFORCEMENT, TO ELIMINATE SETTLEMENT OF ADJOINING SIDEWALK WHEN APPLICABLE. THIS WORK SHALL BE INCIDENTAL TO THE COST OF THE CURB BOX.

FRAME PLAN VIEW (LEFT HALF)

FRAME ELEVATION

SECTION E-E

SECTION D-D

USE WITH CUR. STD. DWGS. RDB-280 RDB-281 RDB-283 RDB-400 RDB-410 RDB-420

KENTUCKY DEPARTMENT OF HIGHWAYS

CURB BOX INLET TYPE B (TOP PHASE TABLE)

STANDARD DRAWING NO. RDB-280-04

SUBMITTED: 12-01-15
 APPROVED: 12-01-15

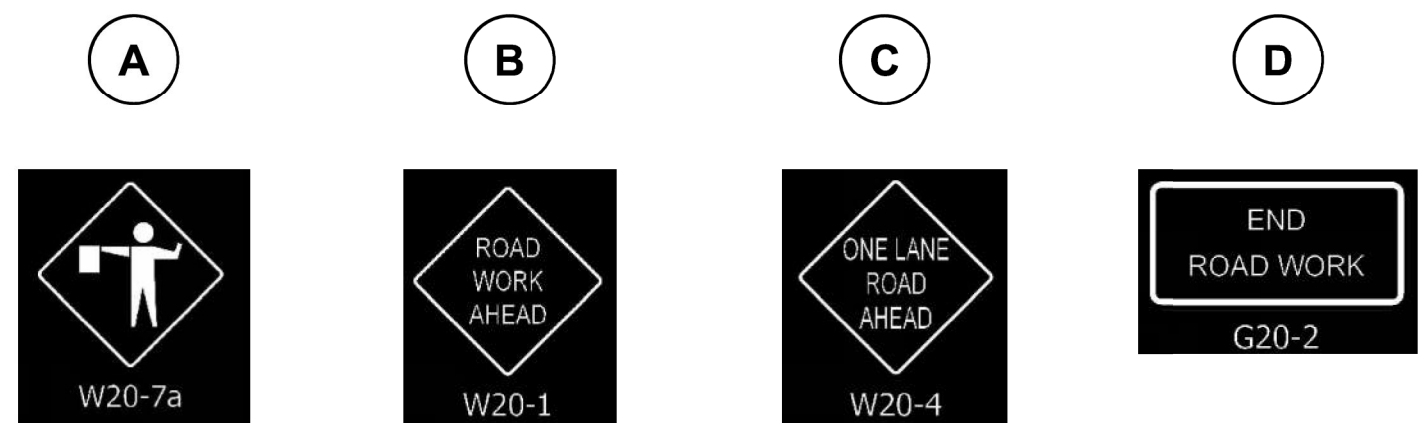
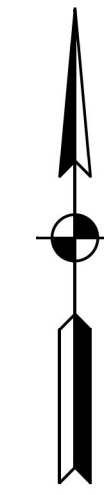
For Public Viewing Only - Not for Construction

FILE: Z:\COMMONWEALTH\CLIENTS\MAYFIELD\DD2014\COD MITIGATION PROJECTS\CDMA CURRENT FILES\DRAWINGS\ARBOR CT\01- NOT DRAWINGS.DWG
 Saved: 8/26/2015 3:47:36 PM Plotted: 8/26/2015 6:46:06 AM Current User: Van Games User Security: Aggressive



TRAFFIC CONTROL PLAN

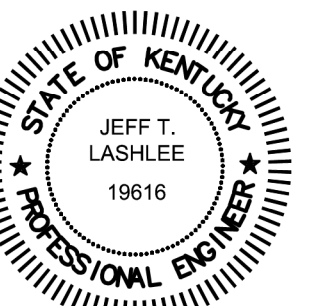
SCALE: 1"=30'-0"
 0 30' 60'



- LEGEND:**
- CONSTRUCTION SIGN
 - WORK ZONE
 - DRUM

GENERAL NOTES:

1. CONTRACTOR TO MAINTAIN TRAFFIC IN PHASES WHILE BUILDING PROJECT.
2. DROP OFFS OF LESS THAN 6" SHALL BE PROTECTED WITH DRUMS AT ALL TIMES.
3. DROP OFFS EXCEEDING 6" SHALL ONLY EXIST DURING DAYLIGHT HOURS WITH FLAGGERS PRESENT.
4. IF DROPS OFFS EXCEEDING 6" NEED TO BE LEFT OVERNIGHT, STEEL PLATING SHALL BE USED.
5. ALL SIGNS, BARRICADES, AND OTHER TRAFFIC CONTROL DEVICES SHALL BE PLACED IN ACCORDANCE WITH LATEST EDITION OF THE MUTCD AND KYTC STANDARDS.
6. CONTRACTOR IS RESPONSIBLE FOR PROPER IMPLEMENTATION AND MAINTENANCE OF THE TRAFFIC CONTROL PLAN.
7. MAINTAIN ACCESS TO DRIVEWAYS AT ALL TIMES OR COORDINATE CLOSURE WITH PROPERTY OWNER.
8. CONTRACTOR SHALL INFORM IMPACTED PROPERTY OWNERS OF THE PARTIAL CLOSURE IN ADVANCE. PERSONAL CONTACT SHALL BE ATTEMPTED. IF UNSUCCESSFUL, A DOOR HANGER SHALL BE PLACED INFORMING THE RESIDENTS OF THE PLANNED PROJECT, IMPACT TO TRAVEL, AND ANTICIPATED ROAD CLOSURE SCHEDULE.
9. CONTRACTOR SHALL NOT DISRUPT TRAFFIC IN A SINGLE LANE FOR MORE THAN 48 HOURS.



Signature: *Jeff T. Lashlee* Date: 8-26-25

CITY OF MAYFIELD
 GRAVES COUNTY, KENTUCKY
 ARBOR COURT
 CULVERT REPLACEMENT PROJECT

© 2025 BY COMMONWEALTH ENGINEERS, INC. ALL RIGHTS RESERVED. REPRODUCTION OF ANY PART WITHOUT PERMISSION IS PROHIBITED.
Kentucky 811
 Know what's below. 811 before you dig.
 1-800-762-6007
 (IT'S THE LAW)

| | |
|----------------------|--|
| Date | |
| By | |
| Submitted / Revision | |
| No. | |

| | | |
|-----------------------|-----------------------|--------------------|
| Designed By: JTL | Drawn By: KJG | Checked By: JTL |
| Issue Date: 9/4/25 | Project No: D25014 | Scale: AS SHOWN |

TRAFFIC CONTROL PLAN

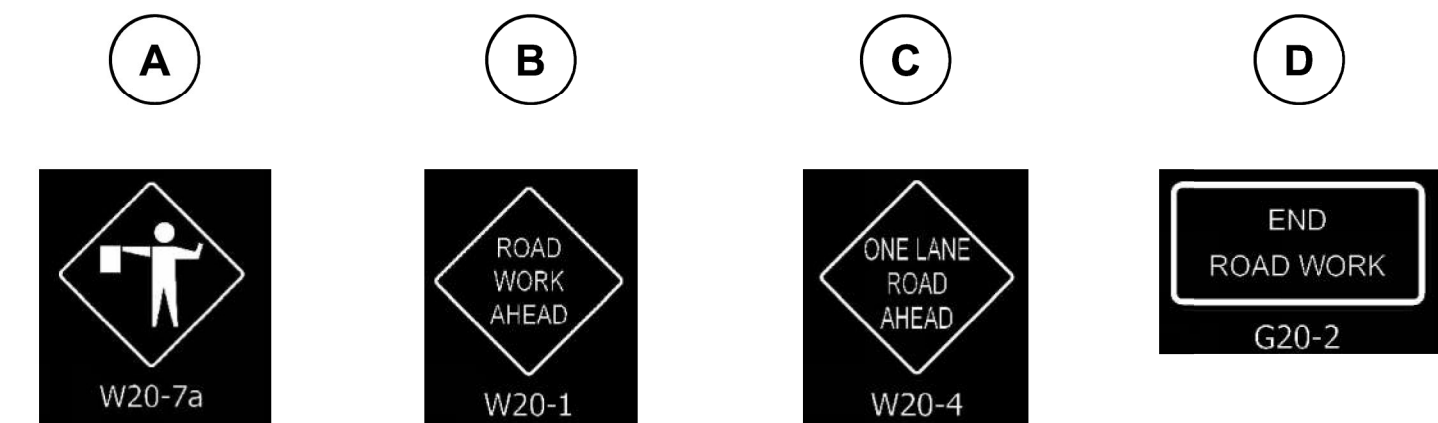
Drawing No:
TC1
 Sheet: 14 OF 19



For Public Viewing Only - Not For Downloading

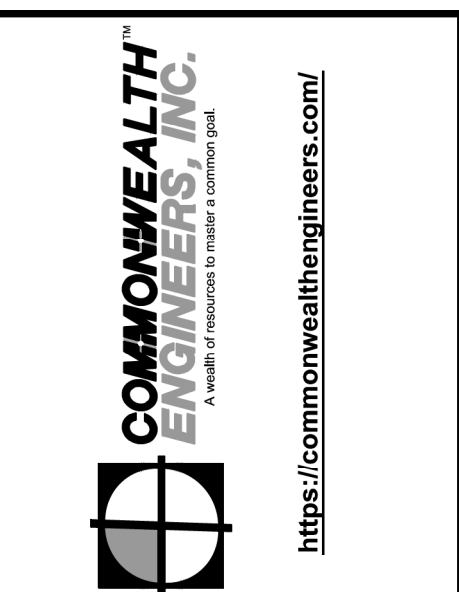
TRAFFIC CONTROL PLAN

SCALE: 1"=30'-0"
 0 30' 60'



- LEGEND:**
- CONSTRUCTION SIGN
 - WORK ZONE
 - DRUM

- GENERAL NOTES:**
1. CONTRACTOR TO MAINTAIN TRAFFIC IN PHASES WHILE BUILDING PROJECT.
 2. DROP OFFS OF LESS THAN 6" SHALL BE PROTECTED WITH DRUMS AT ALL TIMES.
 3. DROP OFFS EXCEEDING 6" SHALL ONLY EXIST DURING DAYLIGHT HOURS WITH FLAGGERS PRESENT.
 4. IF DROPS OFFS EXCEEDING 6" NEED TO BE LEFT OVERNIGHT, STEEL PLATING SHALL BE USED.
 5. ALL SIGNS, BARRICADES, AND OTHER TRAFFIC CONTROL DEVICES SHALL BE PLACED IN ACCORDANCE WITH LATEST EDITION OF THE MUTCD AND KYTC STANDARDS.
 6. CONTRACTOR IS RESPONSIBLE FOR PROPER IMPLEMENTATION AND MAINTENANCE OF THE TRAFFIC CONTROL PLAN.
 7. MAINTAIN ACCESS TO DRIVEWAYS AT ALL TIMES OR COORDINATE CLOSURE WITH PROPERTY OWNER.
 8. CONTRACTOR SHALL INFORM IMPACTED PROPERTY OWNERS OF THE PARTIAL CLOSURE IN ADVANCE. PERSONAL CONTACT SHALL BE ATTEMPTED. IF UNSUCCESSFUL, A DOOR HANGER SHALL BE PLACED INFORMING THE RESIDENTS OF THE PLANNED PROJECT, IMPACT TO TRAVEL, AND ANTICIPATED ROAD CLOSURE SCHEDULE.
 9. CONTRACTOR SHALL NOT DISRUPT TRAFFIC IN A SINGLE LANE FOR MORE THAN 48 HOURS.



STATE OF KENTUCKY
 JEFF T. LASHLEE
 19616
 PROFESSIONAL ENGINEER
 Signature: [Signature] Date: 8-26-25

CITY OF MAYFIELD
 GRAVES COUNTY, KENTUCKY
 ARBOR COURT
 CULVERT REPLACEMENT PROJECT

© 2025 BY COMMONWEALTH ENGINEERS, INC. ALL RIGHTS RESERVED. REPRODUCTION OF ANY PART OF THIS DRAWING WITHOUT PERMISSION IS PROHIBITED.
 Kentucky 811
 Know what's below. 811 before you dig.
 1-800-762-6007
 (IT'S THE LAW)

| | |
|----------------------|--|
| Date | |
| By | |
| Submitted / Revision | |
| No. | |

Designed By: JTL Drawn By: KJG Checked By: JTL
 Issue Date: 9/4/25 Project No: D25014 Scale: AS SHOWN

TRAFFIC CONTROL PLAN

Drawing No:
TC2
 Sheet: 15 OF 19

