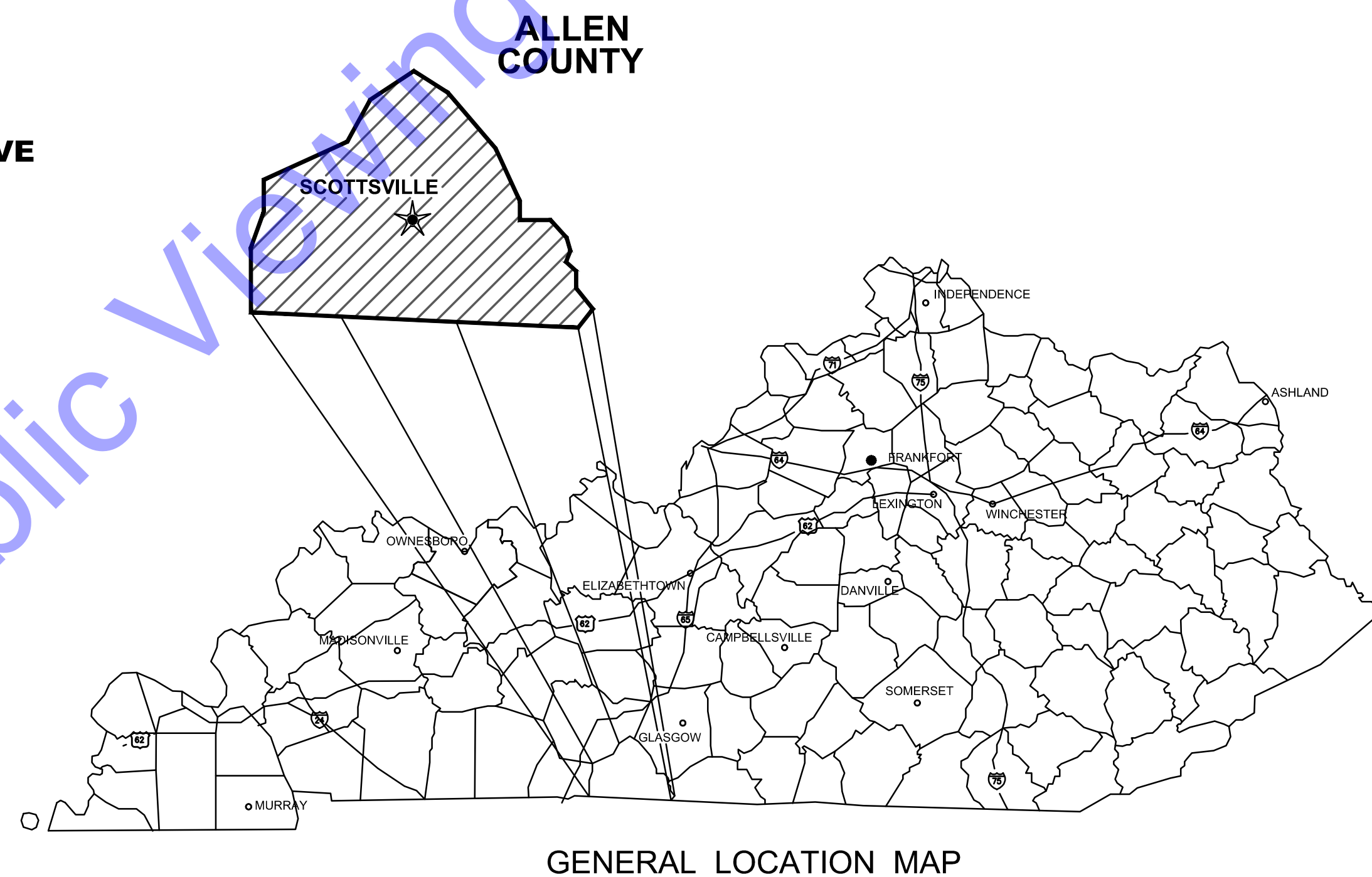


ALLEN COUNTY FISCAL COURT ALLEN COUNTY, KENTUCKY

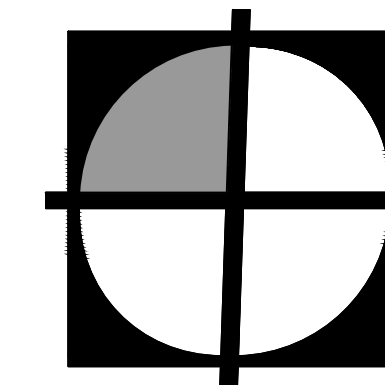
ALLEN COUNTY TRANSFER STATION IMPROVEMENTS JUNE 2026

ALLEN COUNTY CONTACTS

DENNIS HARPER	COUNTY JUDGE EXECUTIVE
TODD BRANSFORD	MAGISTRATE
WENDELL SPEARS	MAGISTRATE
TONY WOLFE	MAGISTRATE
RICKY COOKSEY	MAGISTRATE
ANTHONY THOMPSON	MAGISTRATE



GENERAL LOCATION MAP



COMMONWEALTH
ENGINEERS, INC.
A wealth of resources to master a common goal.

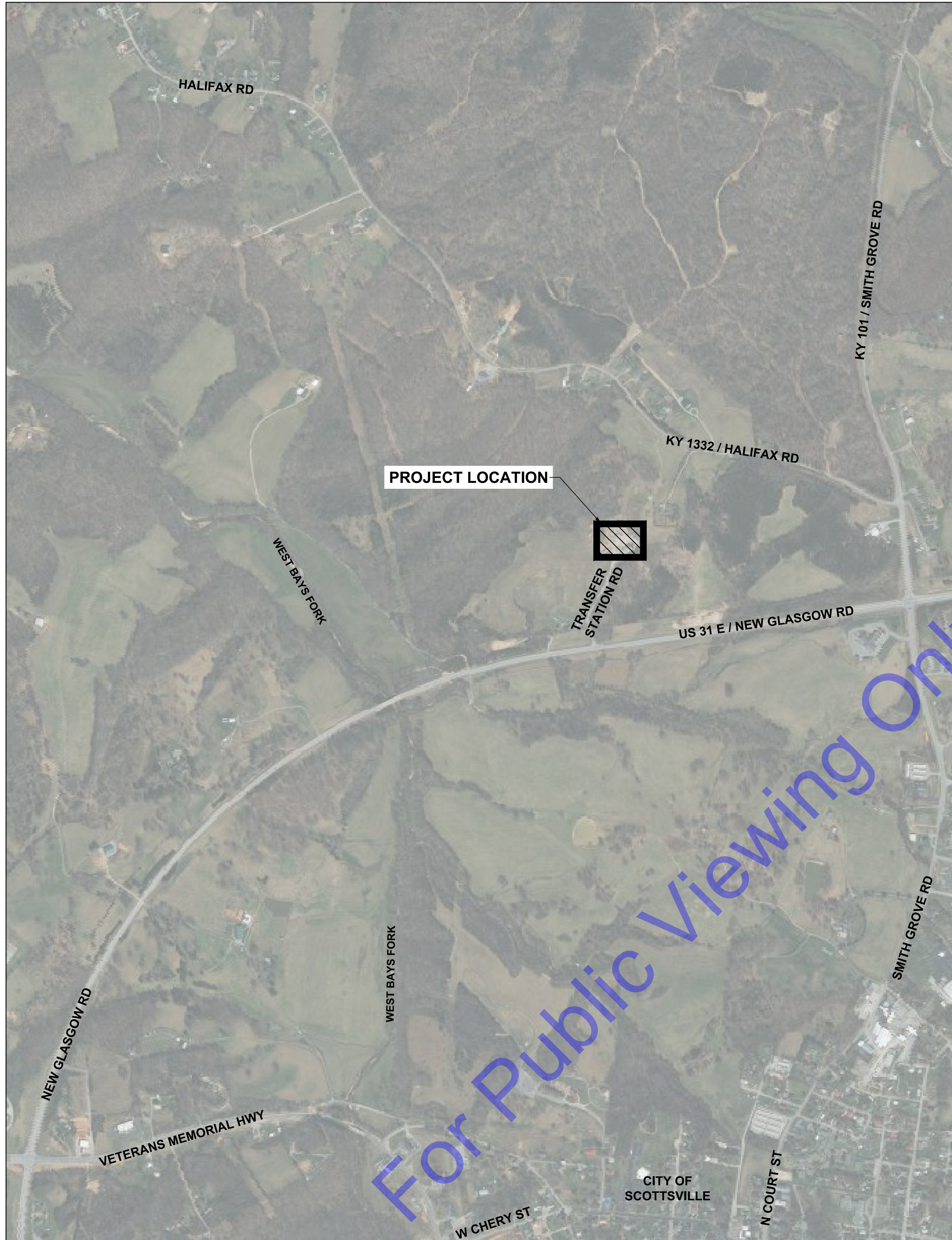
QA/QC BY : Ryan Marovich 6/19/26
RYAN MAROVICH DATE :

CERTIFIED BY : Jeff T. Lashlee 6/19/26
JEFF T. LASHLEE, P.E. DATE :
KENTUCKY P.E. NO. 19616

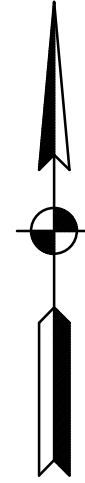


CONTRACT NO. : D23135

FILE: Z:\COMMONWEALTH\ALLEN COUNTY\023105 TRANSFER STATION IMPROVEMENTS\08 CADD\CURRENT FILES\DRAWINGS\02-GENERAL DRAWINGS.DWG
 Sheet: 6/19/26 13:35:16 AM Printer: 6/19/2026 10:59:32 AM Current User: Drew Jettis - User@commonwealthengineers.com



VICINITY MAP
NOT TO SCALE



Sheet List Table		
SHEET NO.	DRAWING NO.	SHEET TITLE
GENERAL DRAWINGS		
01	G1	TITLE SHEET
02	G2	VICINITY MAP AND DRAWING INDEX
03	G3	GENERAL ABBREVIATIONS, LEGENDS, SYMBOLS, AND NOTES
04	G4	GENERAL PROJECT NOTES
CIVIL DRAWINGS		
05	P1-1	SITE PLAN
06	P1-2	GRADING PLAN
MISC DETAILS		
07	MD1	MISCELLANEOUS DETAILS I
08	MD2	MISCELLANEOUS DETAILS II

For Public Viewing Only - Not For Downloading

COMMONWEALTH ENGINEERS, INC.
 A member of the COMMONWEALTH ENGINEERS GROUP, INC.
<https://commonwealthengineers.com/>

OFFICE LOCATIONS IN:
 INDIANAPOLIS, IN. (2)
 EVANSVILLE, IN.
 FORT WAYNE, IN.
 CROWNING POINT, IN.
 BOWLING GREEN, KY.
 SOUTH BEND, IN.

STATE OF KENTUCKY
 JEFF T. LASHLEE
 19816
 LICENSED PROFESSIONAL ENGINEER

Jeff T. Lashlee 6/19/26
 Signature Date

ALLEN COUNTY FISCAL COURT
 ALLEN COUNTY, KENTUCKY
 ALLEN COUNTY TRANSFER STATION IMPROVEMENTS

© 2026 BY COMMONWEALTH ENGINEERS, INC. ALL RIGHTS RESERVED. REPRODUCTION OR TRANSMISSION IN ANY FORM OR BY ANY MEANS WITHOUT PERMISSION IS PROHIBITED.

Kentucky 811
 Know what's below. 811 before you dig.
 1-800-382-5544
 (IT'S THE LAW)

No.	Submitted / Revision	By	Date

Designed By: JTL Drawn By: SML Checked By: RNM
 Issue Date: 6/19/26 Project No: D23135 Scale: AS SHOWN

VICINITY MAP AND DRAWING INDEX

Drawing No:
G2
 Sheet: 02 OF 08

GENERAL ABBREVIATIONS

A	AIR	FLD	FILTRATE DRAIN	P/L	MATERIAL
AB	ANCHOR BOLT	FLG	FLANGE	POJ	PUSH ON JOINT
AFF	ABOVE FINISH FLOOR	FL	FLUSHING LINE	PSF	POUNDS PER SQUARE FOOT
ALT	ALTERNATE	FLR	FLOOR	PSI	POUNDS PER SQUARE INCH
ALUM	ALUMINUM	FM	FORCE MAIN	PVC	POLYVINYL CHLORIDE
@	AT	FRP	FIBER REINFORCED PLASTIC	PW	POTABLE WATER
APP.	APPARENT	FT	FEET OR FOOT	R	RECIRCULATION
ATT	AERATION TANK TRANSFER	FTG	FOOTING	RAD	RADIUS
AUTO	AUTOMATIC	FW	FINISHED WATER	RAS	RETURN ACTIVATED SLUDGE
AVG	AVERAGE	G	GAS	RCP	REINFORCED CONCRETE PIPE
B	BAFFLE	GALV	GALVANIZED	RD	ROOF DRAIN
BLDG	BUILDING	GEN	GENERAL	REINF	REINFORCING
BM	BENCH MARK	GRD	GROUND OR GRADE	REQ'D	REQUIRED
BOT	BOTTOM	HB	HOSE BIBB	R/W (ROW)	RIGHT-OF-WAY
BRG	BEARING	HORIZ	HORIZONTAL	SAN	SANITARY
CFM	CUBIC FEET PER MINUTE	HP	HORSEPOWER	SAS	SANITARY SEWER
CL	CENTERLINE	HW	HOT WATER	SCH	SCHEDULE
CO	CLEAN OUT	ID	INSIDE DIAMETER	SECT	SECTION
COL/C	COLUMN	IJ	ISOLATION JOINT	SF	SQUARE FEET
CONC	CONCRETE	INV	INVERT	SHT	SHEET
COP	COPPER	IP	IRON PIN	SL	SAMPLE LINE
CJ	CONSTRUCTION JOINT	LAV	LAVATORY	SOS	STORM SEWER
CW	COLD WATER	LB	POUND	SP	STOP PLATE
CY	CUBIC YARD	LL	LIVE LOAD	SQ	SQUARE
D	DRAIN	LLV	LONG LEG VERTICAL	STD	STANDARD
DEC	DECANT	LTG	LIGHTING	S STL, SS	STAINLESS STEEL
DIA	DIAMETER	MAX	MAXIMUM	STL	STEEL
DIM	DIMENSION	MCC	MOTOR CONTROL CENTER	SUP	SUPERNATANT
DI	DUCTILE IRON PIPE	MGD	MILLIONS GALLONS PER DAY	SY	SQUARE YARD
DL	DEAD LOAD	MH	MANHOLE	TOS	TOP OF SLAB
DSPT	DOWN SPOUT	MIN	MINIMUM, MINUTE	TOW	TOP OF WALL
DWG	DRAWING	MJ	MECHANICAL JOINT	TW	TERTIARY WATER
E	ELECTRICAL CONDUIT	NC	NORMALLY CLOSED	TYP	TYPICAL
EA	EACH	NG	NATURAL GAS	V	VACUUM OR VALVE
EF	EACH FACE	NIC	NOT IN CONTACT	VAR	VARIES
EFFL	EFFLUENT	NO	NORMALLY OPEN	VERT	VERTICAL
EL	ELEVATION	NO.	NUMBER	W	WEIR
EW	EACH WAY	NPW	NON-POTABLE WATER	W/	WITH
EX	EXISTING	OC	ON CENTER	W/O	WITHOUT
EXF	EXHAUST FAN	OD	OUTSIDE DIAMETER	WAS	WASTE ACTIVATED SLUDGE
EXP JP	EXPANSION JOINT	OPG	OPENING	WC	WATER CLOSET
F	FILTER	OPP	OPPOSITE	WH	WATER HEATER
FCAR	FLANGED COUPLING ADAPTER, RESTRAINED	PB	PULL BOX	WL	WATER LINE
FD	FLOOR DRAIN	PE	POLYETHYLENE EXP. JT.	WWF	WELDED WIRE FABRIC
FDN	FOUNDATION			YH	YARD HYDRANT
FH	FIRE HYDRANT				

GENERAL NOTES

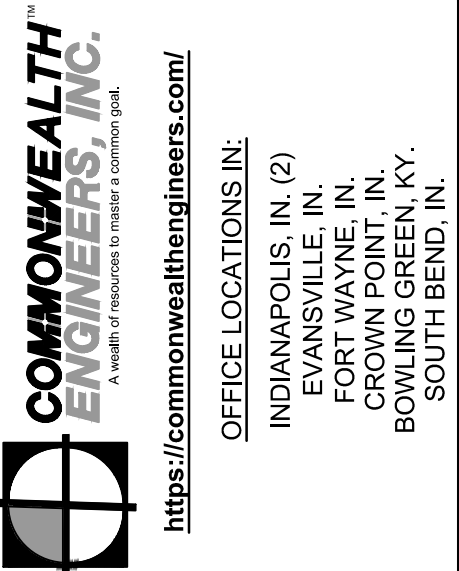
1. THE PURPOSE OF THIS PROJECT IS TO COLLECT AND STORE LEACHATE FROM TRANSFER STATION OPERATIONS UNTIL HAULING CAN TAKE PLACE.
2. THE CONTRACTOR SHALL EXERCISE EXTREME CAUTION TO SAFELY MAINTAIN OPERATIONS OF THE TRANSFER STATION DURING CONSTRUCTION.
3. FREQUENT COMMUNICATION BETWEEN THE CONTRACTOR AND TRANSFER STATION STAFF IS REQUIRED.
4. CONTRACTOR SHALL ANTICIPATE PRECIPITATION EVENTS AND STAGE THE PROJECT TO ELIMINATE LEACHATE DISCHARGE FROM THE FACILITY.
5. THE CONTRACTOR MAY HAVE TO STAGE CONSTRUCTION TO ALLOW CONTINUOUS OPERATION.
6. THE CONTRACTOR SHALL CONFORM TO THE TRANSFER STATION'S GROUND WATER PROTECTION PLAN.
7. MATERIALS SHALL COMPLY WITH KENTUCKY TRANSPORTATION CABINET STANDARDS, UNLESS OTHERWISE NOTED.
8. THE CONTRACTOR IS REQUIRED BY LAW TO HAVE UTILITIES LOCATED PRIOR TO EXCAVATION.

UTILITY / PROJECT CONTACT INFORMATION

NORTH CENTRAL TELEPHONE COOPERATIVE: 800-752-6007
 ALLEN COUNTY WATER DISTRICT: 270-622-3040
 TRI-COUNTY ELECTRIC CORPORATION: 800-369-2111

PROJECT NOTES

1. THE PROJECT SITE IS LOCATED AT 100 TRANSFER STATION ROAD (OFF US 31-E BETWEEN US 231 AND KY 101) SCOTTSVILLE, KY 42164.
2. THE CONTRACTOR SHALL COORDINATE DAY-TO-DAY WORK WITH DEREK ISOMBERG: 270-606-0115.
3. THE CONTRACTOR SHALL WORK WITHIN THE POSTED HOURS OF THE TRANSFER STATION (M-F 7:30 - 3:30 AND SATURDAY 7:00 TO 11:30). WORK OUTSIDE OF THESE HOURS WILL REQUIRE PRE-APPROVAL BY ALLEN COUNTY PERSONNEL.
4. DRAINAGE INLETS SHALL HAVE A METAL PRE-SCREEN MECHANICALLY ATTACHED TO PREVENT SOLIDS FROM ENTERING THE LEACHATE BOX AND PIPE. THE SCREEN MUST BE DETACHABLE FOR REPLACEMENT. ROUTINE CLEANING OF THE PRE-SCREEN WILL BE REQUIRED DURING CONSTRUCTION.
5. FLOAT SWITCH AND INDICATOR / WARNING LIGHT AND BUZZER SHALL BE INSTALL BY THE CONTRACTOR'S ELECTRICIAN AND MEET ALL CODES. FLOAT SWITCH SHALL ACTIVATE AT MULTIPLE LEVELS PROVIDING WARNING AND CALL FOR ACTION BASED ON THE LEVEL OF LEACHATE IN THE COLLECTION TANK.



Signature: *Jeff T. Lashlee* Date: 6/19/26

ALLEN COUNTY FISCAL COURT
ALLEN COUNTY, KENTUCKY
ALLEN COUNTY TRANSFER STATION IMPROVEMENTS



No.	Submitted / Revision	Date	By

Designed By: JTL Drawn By: SML Checked By: RNM
 Issue Date: 6/19/26 Project No: D23135 Scale: AS SHOWN

GENERAL ABBREVIATIONS, LEGENDS, SYMBOLS, AND NOTES

Drawing No: **G3**
 Sheet: 03 OF 08

HATCHING SYMBOLS

	-CMU WALL (PLAN VIEW)
	-GRANULAR BACKFILL (PROFILE VIEW)
	-DEMOLITION (CONTRACTOR SHALL REFER TO DETAILED SPECIFICATIONS)
	-GROUT
	-CONCRETE
	-STEEL
	-COMPACTED GRANULAR BACKFILL OR COMPACTED FOUNDATION
	-ABANDONED IN PLACE

DRAWING SET LEGEND

	EXISTING OVERHEAD TELEPHONE LINE		AC UNIT		TELEPHONE MANHOLE
	EXISTING GAS LINE AND VALVE		BOLLARD		TELEPHONE LINE MARKER
	EXISTING WATER LINE AND VALVE		BOULDER / LARGE ROCK		TRAFFIC MANHOLE
	EXISTING FIBER OPTIC LINE		CENTER LINE MONUMENT		WATER LINE MARKER
	EXISTING OVERHEAD ELECTRIC LINE		CONTROL POINT / BENCH MARK		WATER METER
	EXISTING BURIED ELECTRIC		DRILL HOLE		VALVE
	EXISTING NON-POTABLE WATER LINE		MAIL BOX		IRRIGATION CONTROL VALVE
	EXISTING POTABLE WATER LINE		FLAG POLE		FIRE HYDRANT
	EXISTING BURIED TELEPHONE LINE		POST		FLUSH HYDRANT
	EXISTING FENCE		STUMP		YARD HYDRANT
	RIGHT-OF-WAY		BUSH / HEDGE		WALL SPIGOT
	PROPERTY LINE		DECIDUOUS TREE		EXISTING PIPE PLUG
	EDGE OF ROAD		CONIFEROUS TREE		STORM CATCH BASIN (SQUARE)
	EDGE OF ROAD WITH CURB		SIGN		STORM CATCH BASIN (ROUND)
	EXISTING MAJOR CONTOUR LINE		UTILITY LOCATE FLAG		STORM CURB INLET
	EXISTING MINOR CONTOUR LINE		GAS LINE MARKER		STORM MANHOLE
	NEW UNDERGROUND CONDUIT		GAS VALVE		SANITARY MANHOLE
	PROPOSED MAJOR CONTOUR LINE		GAS METER		SANITARY VALVE
	PROPOSED MINOR CONTOUR LINE		GUY POLE		CLEANOUT
	PROPOSED STORMWATER LINE		POWER POLE		VENT
			LIGHT POLE		NEW VALVE
			GUY WIRE		NEW FIRE HYDRANT
			ELECTRIC METER		NEW FLUSH HYDRANT
			ELECTRIC PANEL		NEW WET SADDLE AND VALVE BODY
			ELECTRIC TRANSFORMER		NEW PLUG
			HAND HOLE BOX		NEW LINE STOP
			FIBER OPTIC MARKER		NEW CUT AND CAP
			TEL/TV PEDESTAL		NEW SANITARY MH

File: Z:\SHARED\CLIENTS\ALLEN COUNTY\023145 TRANSFER STATION IMPROVEMENTS\08 CAD\A CURRENT FILES\DRAWINGS\02 GENERAL DRAWINGS.DWG
 Sheet: 6/19/26 13:52:15 AM Printer: 6/19/26 10:29:34 AM Current User: Drew Dennis User: dennis, g.dennis

File: Z:\KENTUCKY CLIENTS\ALLEN COUNTY\02-27-15 TRANSFER STATION IMPROVEMENTS\08-000A CURRENT FILES\DRAWINGS\02-GENERAL DRAWINGS.DWG
 Sheet: 6/19/26 10:52:16 AM Printer: 6/19/26 10:52:35 AM Current User: Drew Walters User: ddrawalters

GENERAL NOTES

1. NOTHING IN THE GENERAL NOTES SHALL RELIEVE THE CONTRACTOR FROM HIS RESPONSIBILITIES TOWARD THE SAFETY AND CONVENIENCE OF THE GENERAL PUBLIC AND THE RESIDENTS AND BUSINESS OWNERS ALONG THE PROPOSED CONSTRUCTION AREA. THE CONTRACTOR SHALL PAY SPECIAL ATTENTION TO PROVIDING VEHICULAR AND PEDESTRIAN SAFETY DURING THE DURATION OF THE PROJECT. APPROPRIATE MEASURES SUCH AS BARRICADES AND FENCING SHALL BE PROVIDED TO PROTECT PEDESTRIANS FROM OPEN EXCAVATIONS DURING CONSTRUCTION.
2. THE CONTRACTOR SHALL BE RESPONSIBLE FOR JOBSITE SAFETY AND EFFICIENCY OF THE PROJECT. THE CONTRACTOR SHALL PROVIDE EQUIPMENT AND CONSTRUCTION METHODS AND PROCEDURES WHICH ENSURE A SAFE WORKPLACE.
3. THE CONTRACTOR SHALL KEEP CONSTRUCTION WASTE AND RUBBISH GENERATED BY CONSTRUCTION ACTIVITIES MINIMIZED AND WITHIN THE LIMITS OF CONSTRUCTION. ALL CONSTRUCTION WASTE SHALL BE REMOVED DAILY FROM THE JOBSITE.
4. ALL CONSTRUCTION ACTIVITIES SHALL BE IN ACCORDANCE WITH ALLEN COUNTY CODES AND ORDINANCES.
5. THE CONTRACTOR WILL BE RESPONSIBLE FOR ALL REQUIRED CONSTRUCTION TESTING AND INSPECTION COORDINATION AND FEES.
6. THE CONTRACTOR SHOULD EXERCISE EXTREME CAUTION WHEN OPERATING EQUIPMENT AROUND EXISTING OVERHEAD ELECTRIC LINES.
7. BGMU ELECTRIC DIVISION PERSONNEL SHOULD BE CONTACTED PRIOR TO BEGINNING WORK IN THIS AREA SO THAT APPROPRIATE PROTECTIVE MEASURES CAN BE TAKEN.
8. THE LOCATION OF UNDERGROUND UTILITIES ARE BASED ON MARKINGS AND INFORMATION PROVIDED BY THE RESPECTIVE UTILITY AND SHOULD BE CONSIDERED APPROXIMATE. PRIOR TO BEGINNING WORK THE EXACT LOCATION OF UNDERGROUND UTILITIES SHOULD BE DETERMINED AND CHECKED FOR CONFLICTS WITH ANY PROPOSED CONSTRUCTION. THE CONTRACTOR SHOULD CONTACT KY 811 (BUD) AT '811' OR '1-800-752-8007' A MINIMUM OF 48 HOURS PRIOR TO BEGINNING EXCAVATION.

PAVEMENT PLACEMENT AND REPLACEMENT NOTES

1. ALL MATERIALS AND PLACEMENT METHODS UTILIZED FOR ASPHALT PAVEMENT AND CONCRETE ON THE PROJECT SHALL ADHERE TO KENTUCKY TRANSPORTATION CABINET STANDARD SPECIFICATIONS FOR ROAD AND BRIDGE CONSTRUCTION LATEST EDITION AND TO THE THICKNESS SHOWN ON THE PLANS.
2. PROPER COMPACTION OF THE SUBGRADE IS REQUIRED BY THE CONTRACTOR. APPROVED PROOF-ROLLING IS REQUIRED PRIOR TO PLACEMENT OF ADDITIONAL LAYERS OF MATERIAL.
3. THE FINAL SURFACE ELEVATION TOLERANCES OF THE ASPHALT PAVEMENT AND THE CONCRETE CURB AND GUTTER SHALL ADHERE TO THE REQUIREMENTS SPECIFIED IN THE KENTUCKY TRANSPORTATION CABINET STANDARD SPECIFICATIONS FOR ROAD AND BRIDGE CONSTRUCTION, LATEST EDITION.

GRADING AND DRAINAGE NOTES

1. THE SITE SHALL BE CLEARED AND GRUBBED WITHIN THE LIMITS OF EXCAVATION. COMPLETELY DISPOSE OF ALL MATERIALS RESULTING FROM CLEARING AND GRUBBING OFF-SITE. BURNING SHALL NOT BE PERMITTED IN THE PROJECT AREA.
2. AREAS THAT EXHIBIT WEAK SOIL OR OTHERWISE UNSUITABLE CONDITIONS SHALL BE UNDERCUT TO A FIRM LEVEL OF SOIL FOLLOWED BY BACKFILLING THE UNDERCUT AREAS USING AN ENGINEERED FILL OR APPROVED STONE.
3. FILL SHALL BE SATISFACTORY MATERIAL FREE FROM ROOTS, OTHER ORGANIC MATERIAL, AND SHALL ALSO BE FREE OF STONES LARGER THAN 6 INCHES IN DIAMETER.
4. DO NOT ALLOW WATER TO ACCUMULATE IN EXCAVATIONS OR POND ON-SITE. PROVIDE NECESSARY MEASURES TO KEEP THE SITE FREE DRAINING.
5. INSTALL STORM SEWER PIPE AND STRUCTURES TO MEET THE REQUIREMENTS OF THE KENTUCKY TRANSPORTATION CABINET STANDARD SPECIFICATIONS FOR ROAD AND BRIDGE CONSTRUCTION, LATEST EDITION.
6. ALL STORM SEWER PIPE SHALL BE CLASS III REINFORCED CONCRETE PIPE WITH RUBBER GASKETED JOINTS. THE RUBBER GASKETS SHALL MEET THE REQUIREMENTS OF AASHTO M 315.
7. TRENCH DESIGN AND SAFETY FOR PIPELINE CONSTRUCTION IS SOLELY THE RESPONSIBILITY OF THE CONTRACTOR AND SHALL CONFORM TO ALL LOCAL, STATE, AND OSHA REQUIREMENTS.
8. THE CONTRACTOR SHALL SHAPE DITCHES TO THE SPECIFIED DESIGN AS SHOWN IN THE PLANS. THIS WORK WILL NOT BE MEASURED AND PAID FOR DIRECTLY, BUT WILL BE CONSIDERED A PORTION OF THE EXCAVATION COST.

UTILITY NOTES

1. THE CONTRACTOR SHALL OBTAIN APPROVAL FROM ALL GOVERNING AGENCIES HAVING JURISDICTION OF UTILITY SYSTEMS PRIOR TO INSTALLATION.
2. THE CONTRACTOR ADVISED THAT ALL EXISTING UTILITIES SHOWN WERE SURVEYED BASED ON LOCATIONS PROVIDED BY EACH UTILITY COMPANY. OTHER UTILITIES MAY EXIST THAT ARE UNMAPPED. THE CONTRACTOR IS ADVISED TO FIELD VERIFY ALL UNDERGROUND UTILITIES BY CONTACTING THE APPROPRIATE UTILITY COMPANY AT LEAST 48 HOURS PRIOR TO EXCAVATION.
3. THE CONTRACTOR SHALL COORDINATE WATER AND SEWER SERVICES CONSTRUCTION WITH THE REQUIREMENTS OF THE LOCAL UTILITY COMPANY.
4. THE CONTRACTOR SHALL BE RESPONSIBLE FOR VERIFYING THE LOCATIONS AND ELEVATIONS OF EXISTING AND PROPOSED UTILITIES PRIOR TO CONSTRUCTION, ANY CONFLICTS DISCOVERED AFTER CONSTRUCTION HAS BEGUN SHALL CORRECTED AT THE CONTRACTOR'S EXPENSE.
5. THE CONTRACTOR IS RESPONSIBLE FOR ADJUSTING ALL EXISTING FEATURES (SANITARY SEWER MANHOLES, TELEPHONE MANHOLES, WATER MAIN VALVE BOXES, GAS LINE VALVES, ETC.) TO THE PROPOSED FINAL GRADES IN PAVED AREAS- THIS WORK WILL BE CONSIDERED INCIDENTAL TO CONSTRUCTION AND WILL NOT BE PAID FOR SEPARATELY.

SURVEY NOTE

1. SURVEY, BOUNDARIES, AND LEGAL DESCRIPTION WERE PROVIDED BY LANDMARK ENGINEERING, INC., THADDAEUS LUCAS, PLS 3569

SUBMITTALS

1. CONTRACTOR SHALL PROVIDE THE FOLLOWING:
 - 1.a. PLAN OF OPERATION
 - 1.b. PROJECT SCHEDULE WITH MONTHLY UPDATES
 - 1.c. SPILL PREVENTION PLAN
 - 1.d. CONCRETE DESIGN
 - 1.e. TANK SHOP DRAWINGS
 - 1.f. FLOAT AND ANDON LIGHT STATION AND BUZZER

For Public Viewing Only-Not For Downloading



OFFICE LOCATIONS IN:
 INDIANAPOLIS, IN. (2)
 EVANSVILLE, IN.
 FORT WAYNE, IN.
 CROWL POINT, IN.
 BOWLING GREEN, KY.
 SOUTH BEND, IN.
<https://commonwealthengineers.com/>



Signature: *Jeff T. Lashlee* Date: 6/19/26

ALLEN COUNTY FISCAL COURT
ALLEN COUNTY, KENTUCKY
ALLEN COUNTY TRANSFER STATION IMPROVEMENTS

© 2026 BY COMMONWEALTH ENGINEERS, INC. ALL RIGHTS RESERVED. REPRODUCTION OF ANY PART OF THIS DRAWING WITHOUT PERMISSION IS PROHIBITED.

 Know what's below. 811 before you dig.
 1-800-382-5544
 (IT'S THE LAW)

No.	Submital / Revision	Date	By

Designed By: JTL Drawn By: SML Checked By: RNM
 Issue Date: 6/19/26 Project No: D23135 Scale: AS SHOWN

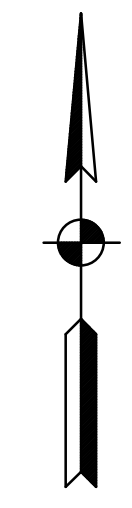
GENERAL PROJECT NOTES

Drawing No:
G4
 Sheet: 04 OF 08



For Public Viewing Only - Not For Downloading

SITE PLAN
 SCALE: 1"=20'-0"
 0 20' 40'



COMMONWEALTH ENGINEERS, INC.
 A member of the Commonwealth Engineering Group
<https://commonwealthengineers.com/>

OFFICE LOCATIONS IN:
 INDIANAPOLIS, IN. (2)
 EVANSVILLE, IN.
 FORT WAYNE, IN.
 CROWL POINT, IN.
 BOWLING GREEN, KY.
 SOUTH BEND, IN.

STATE OF KENTUCKY
 JEFF T. LASHLEE
 19816
 LICENSED PROFESSIONAL ENGINEER

Jeff T. Lashlee 6/19/26
 Signature Date

ALLEN COUNTY FISCAL COURT
ALLEN COUNTY, KENTUCKY
ALLEN COUNTY TRANSFER STATION IMPROVEMENTS

© 2026 BY COMMONWEALTH ENGINEERS, INC. ALL RIGHTS RESERVED. REPRODUCTION OR TRANSMISSION IN ANY FORM OR BY ANY MEANS WITHOUT PERMISSION IS PROHIBITED.

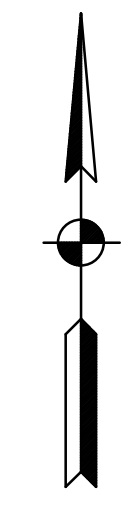
Kentucky 811
 Know what's below. 811 before you dig.
 1-800-382-5544
 (IT'S THE LAW)

No.	Submitted / Revision	By	Date

Designed By: JTL	Drawn By: SML	Checked By: RNM
Issue Date: 6/19/26	Project No: D23135	Scale: AS SHOWN

SITE PLAN

Drawing No:
P1-1
 Sheet: 05 OF 08



COMMONWEALTH ENGINEERS INC.
 A MEMBER OF THE COMMONWEALTH ENGINEERS GROUP
<https://commonwealthengineers.com/>

OFFICE LOCATIONS IN:
 INDIANAPOLIS, IN. (2)
 EVANSVILLE, IN.
 FORT WAYNE, IN.
 CROWL POINT, IN.
 BOWLING GREEN, KY.
 SOUTH BEND, IN.

STATE OF KENTUCKY
 JEFF T. LASHLEE
 19816
 LICENSED PROFESSIONAL ENGINEER

Jeff T. Lashlee
 Signature Date: 6/19/26

ALLEN COUNTY FISCAL COURT, KENTUCKY
ALLEN COUNTY TRANSFER STATION IMPROVEMENTS

© 2026 BY COMMONWEALTH ENGINEERS, INC. ALL RIGHTS RESERVED. REPRODUCTION OR ANY MANNER WITHOUT PERMISSION IS PROHIBITED.

Kentucky 811
 Know what's below. 811 before you dig.
 1-800-382-5544
 (IT'S THE LAW)

No.	Submittal / Revision	Date

Designed By: JTL Drawn By: SML Checked By: RNM

Issue Date: 6/19/26 Project No: D23135 Scale: AS SHOWN

GRADING PLAN

Drawing No:
P1-2
 Sheet: 06 OF 08

